

How to set up a wireless network

MAC OS





Contents

1. Profile settings
2. Profile Delete





KOREA
UNIVERSITY

KU-The Future
110 years and beyond

1. Profile Setting



MAC OS

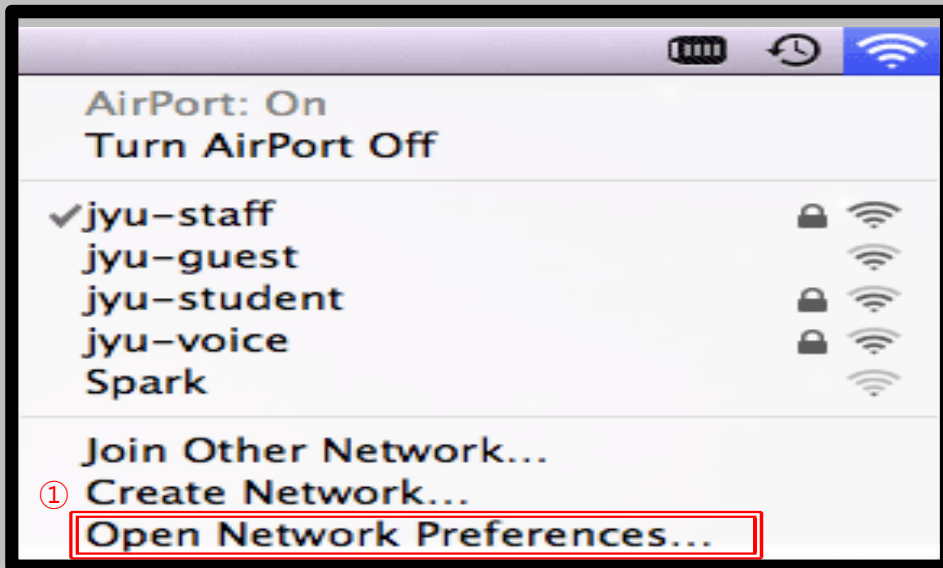
Profile Setting

- Network configuration screen for using wireless LAN in MacBook using IOS
- All terminal settings using IOS are the same.



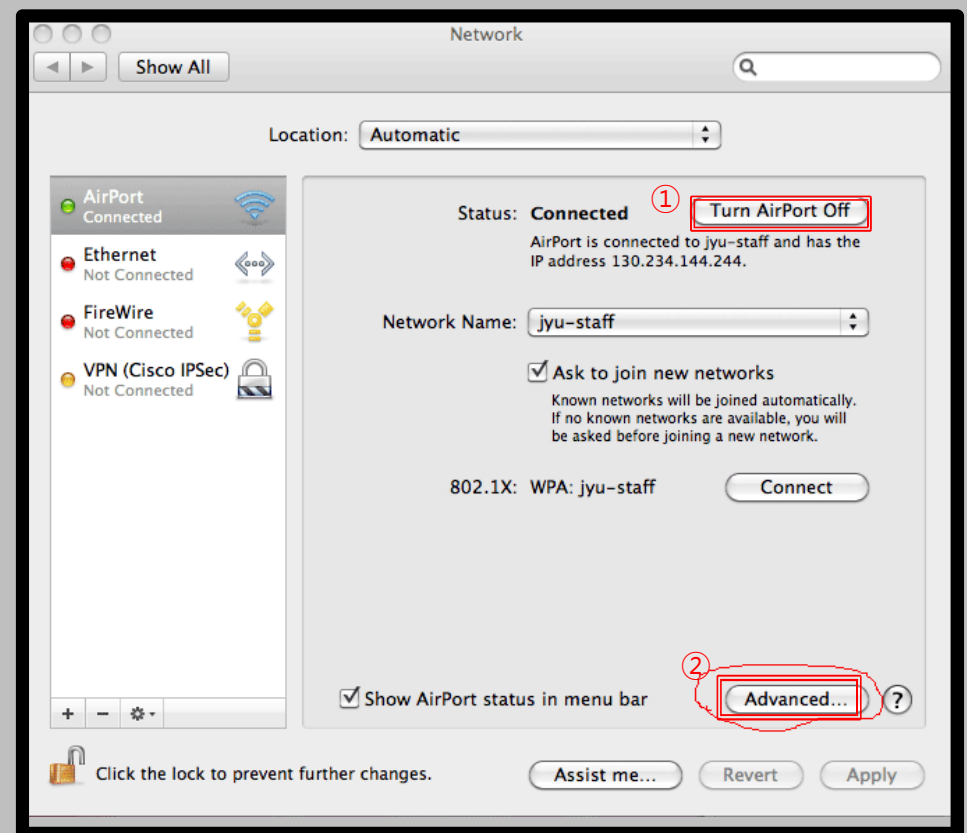
STEP. 1

- ① Wireless Icon ▶ Open Network preferences



STEP. 2

- ① Activate Wi-Fi by pressing the Wi-Fi on button.
- ② Click Advanced(Continue in STEP.3)



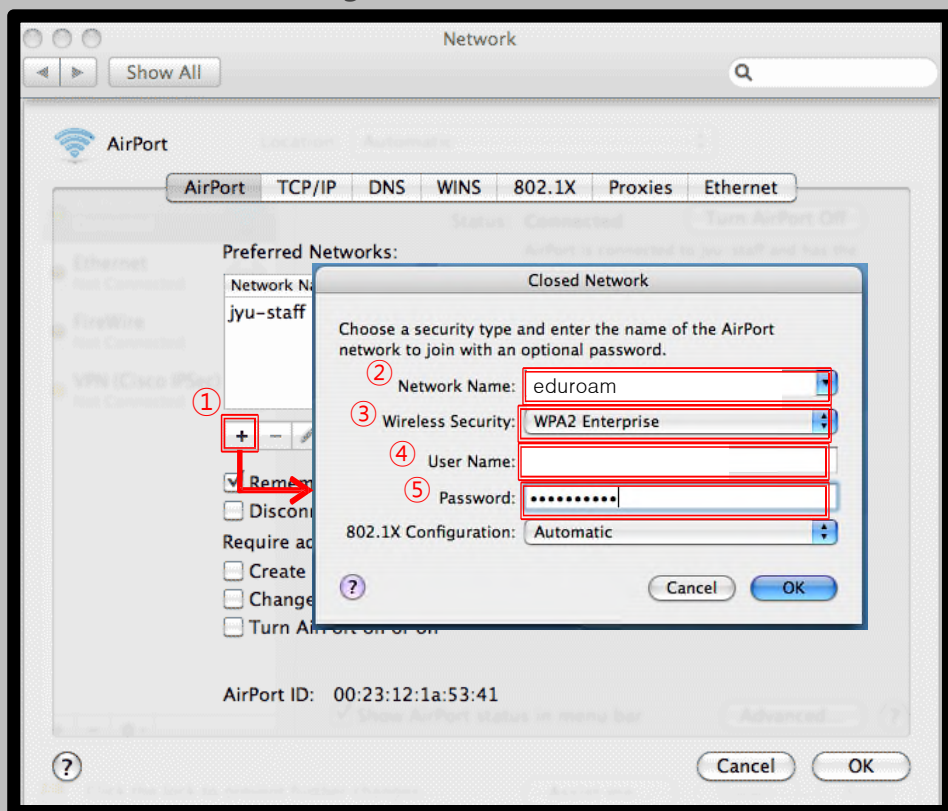
MAC OS Profile Setting

- Network configuration screen for using wireless LAN in MacBook using IOS
- All terminal settings using IOS are the same.



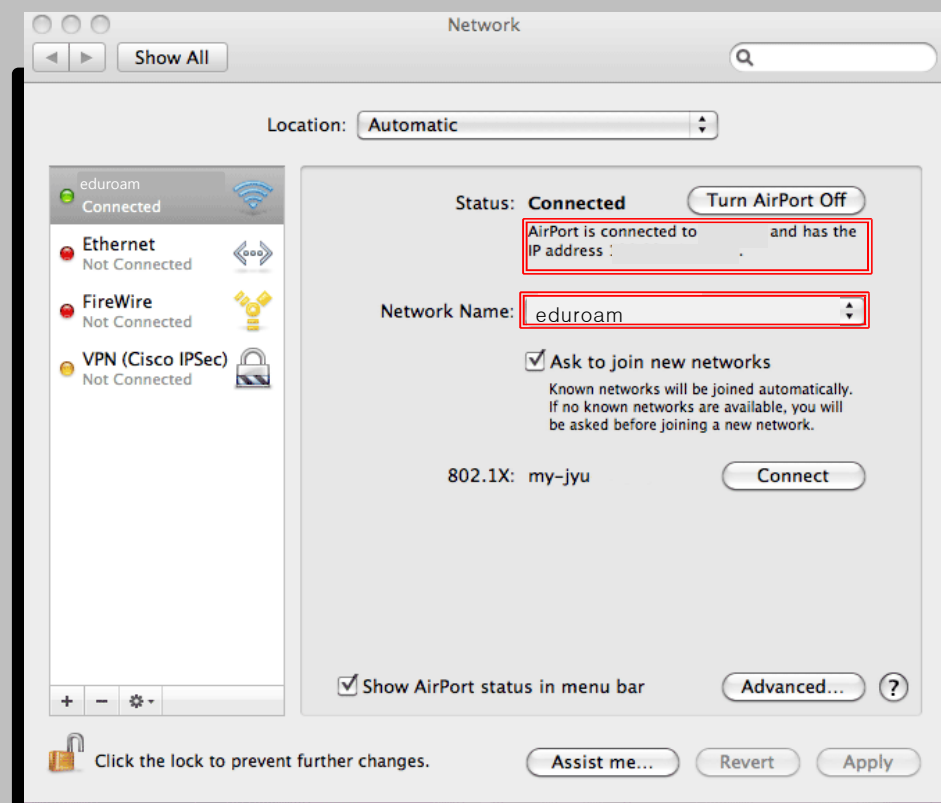
STEP. 3

- ① Click '+' in the network advanced information.
- ② Network name : eduroam (Case, Spacing division)
- ③ Security : Enterprise WPA/WPA2
- ④ User name : Your organization's ID@domain
- ⑤ Password : Your organization's Password



STEP. 4

- ① Confirm connection completion





KOREA
UNIVERSITY

KU-The Future
110 years and beyond

2. Profile Delete



MAC OS

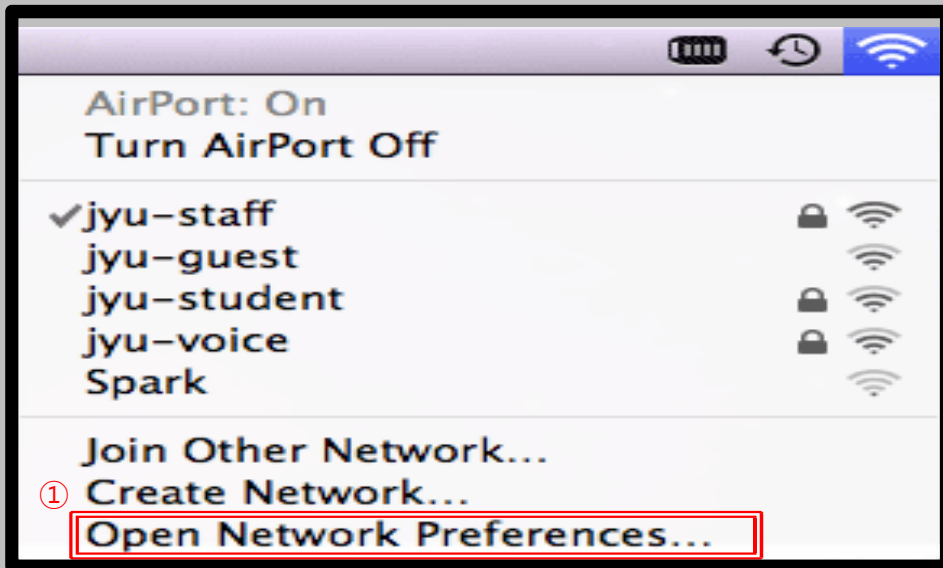
Profile Delete

- This screen is for deleting the wireless LAN from MacBook using IOS
- All terminal settings using IOS are the same.



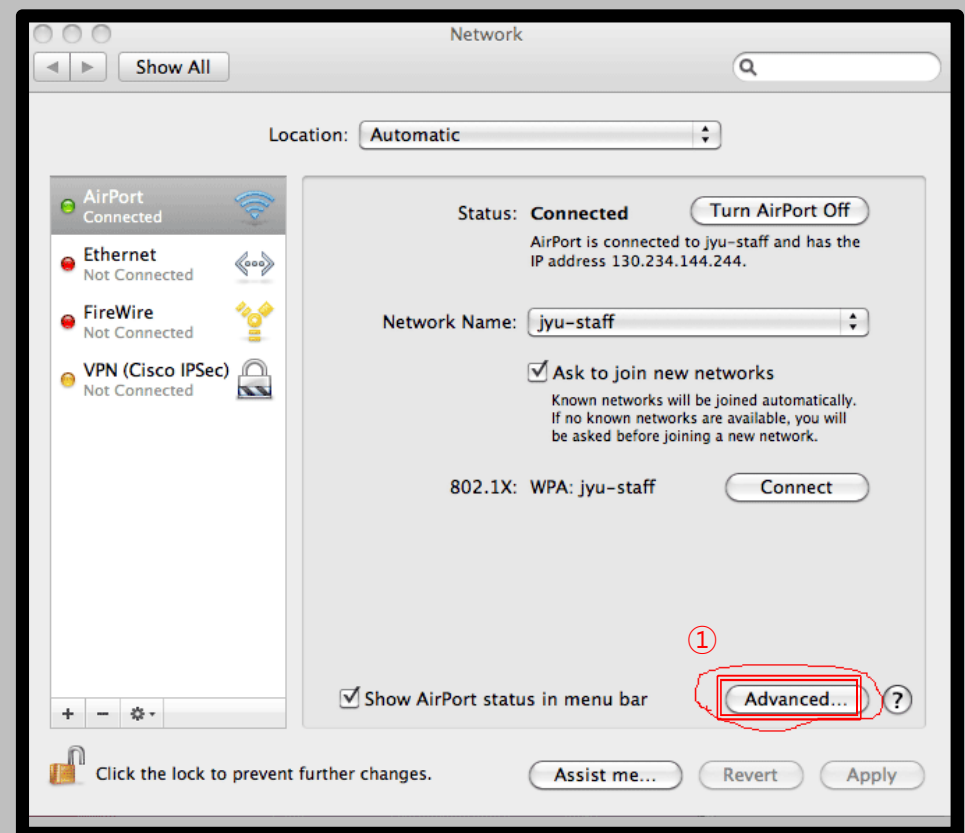
STEP. 1

- ① Wireless Icon ► Open Network preferences



STEP. 2

- ① Click Advanced



MAC OS

Profile Delete

- This screen is for deleting the wireless LAN from MacBook using IOS
- All terminal settings using IOS are the same.

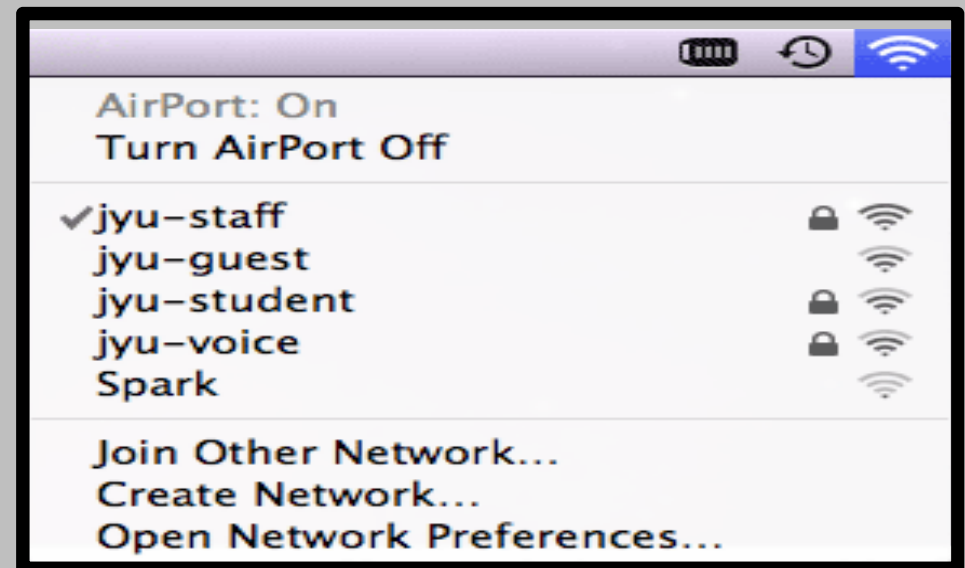
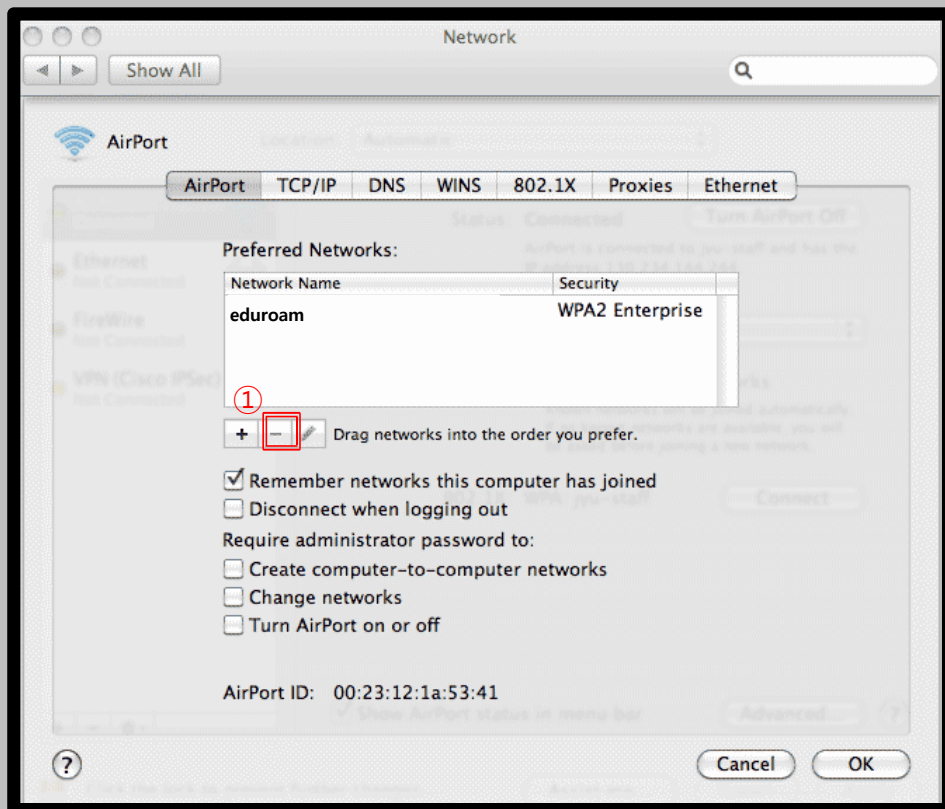


STEP. 3

- ① eduroam Check
- ② Clcik '-' button to delete

STEP. 4

- ① eduroam delete Check



Thank you