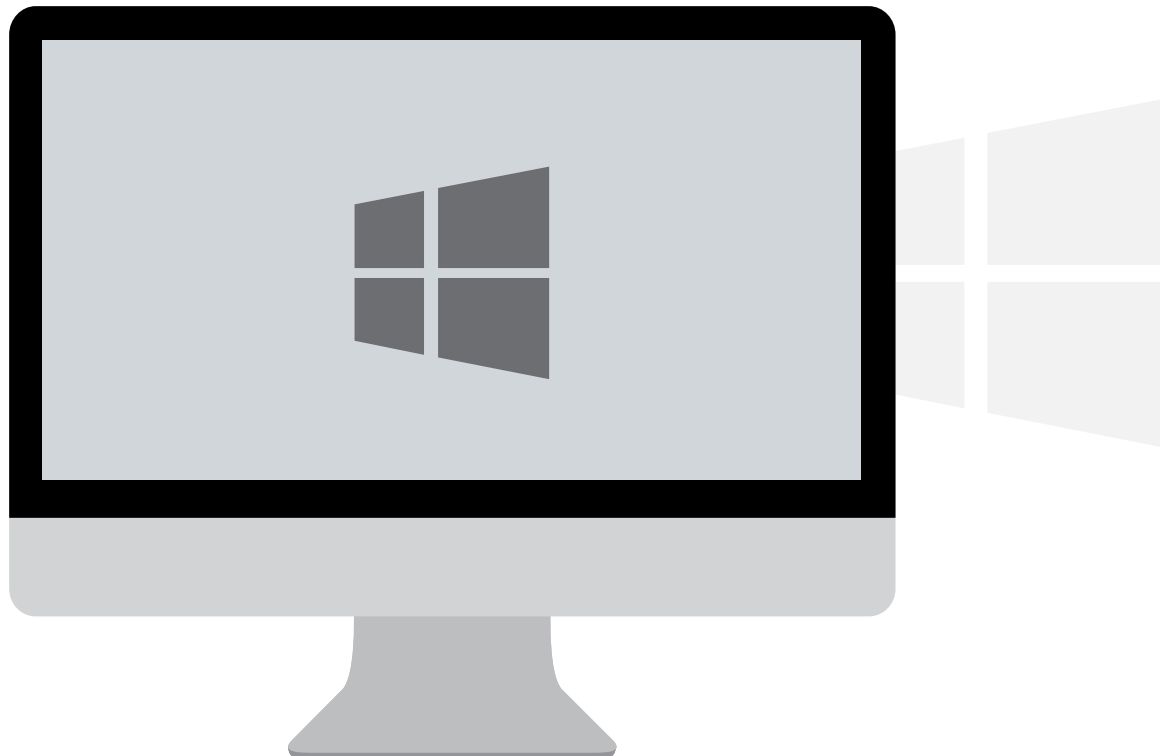




KOREA
UNIVERSITY

KU-The Future
110 years and beyond

How to set up and delete a wireless network. Windows OS Automatic setting





Contents

1. Windows 7, Vista Setting
2. Windows 7, Vista Delete





KOREA
UNIVERSITY

KU-The Future
110 years and beyond

1. Windows 7, Vista Setting



Windows 7, Vista Profile Automatic setting



- Network automatic setting screen for using wireless LAN from PC using Windows 7, Vista
- The contents of each OS may differ when using the Windows built-in setting.

STEP. 1

① www.korea.ac.kr Connect ▶ University Life ▶ Wireless LAN ▶ Click Set profile automatically(bit check)

STEP. 2

① After downloading KU_wifi_profile_install_vista-win7 64bit or 32bit.exe file

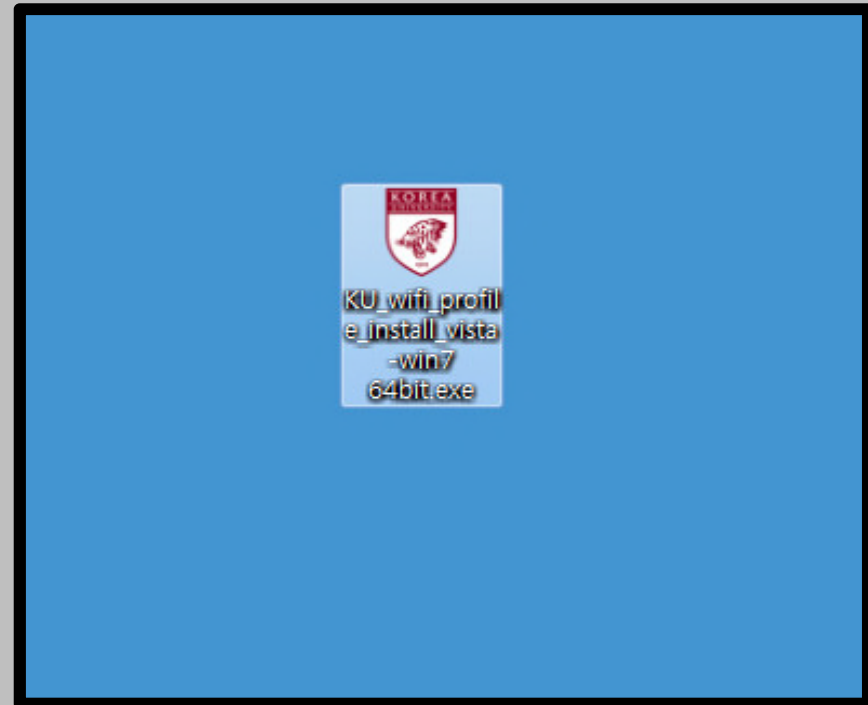
무선랜 이용안내

고려대학교의 무선랜 서비스는 학교구성원에게만 제공되는 서비스로 서울캠퍼스에서 아래와 같이 이용하실 수 있으며, 별도의 신청절차는 없습니다.

구분	OS 종류	매뉴얼		비고	
		한글	English		
노트북	Windows OS 계열	매뉴얼(수동)	Manual(Classic)	① 프로파일 자동설정 64bit 프로파일 자동삭제 64bit 프로파일 자동설정 32bit 프로파일 자동삭제 32bit	
		매뉴얼(자동)	Manual(Auto)		
	MAC OS 계열		매뉴얼		Manual
	스마트폰		Android OS		매뉴얼
		Apple IOS	매뉴얼	Manual	

문의

담당자 : 02) 3290 - 4194, Email Address : jmlee76@korea.ac.kr



Bit verification method

Start ▶ Computer ▶ Right-click "property" ▶ Determining the System Type

Windows 7, Vista Profile manual setting

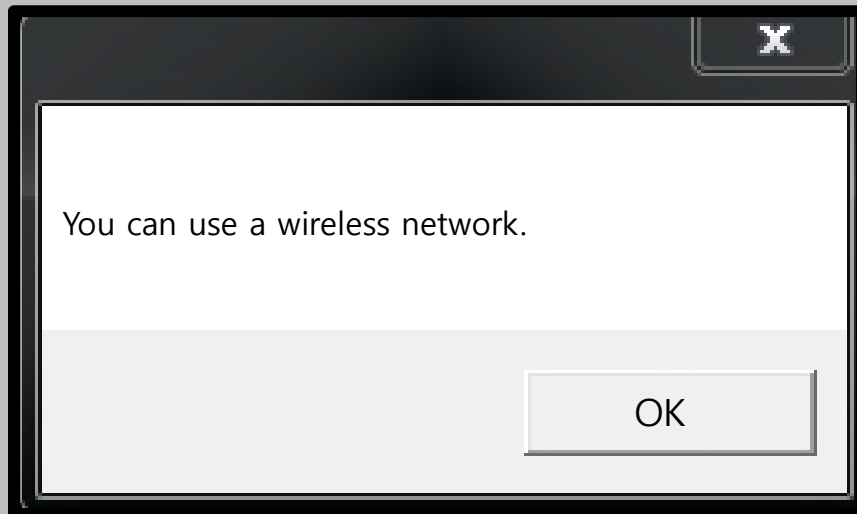
- Network manual setting screen for using wireless LAN from PC using Windows 7, Vista
- **The contents of each OS may differ when using the Windows built-in setting.**



KOREA
UNIVERSITY

STEP. 3

① Profile auto setup complete



Windows 7, Vista Profile manual setting

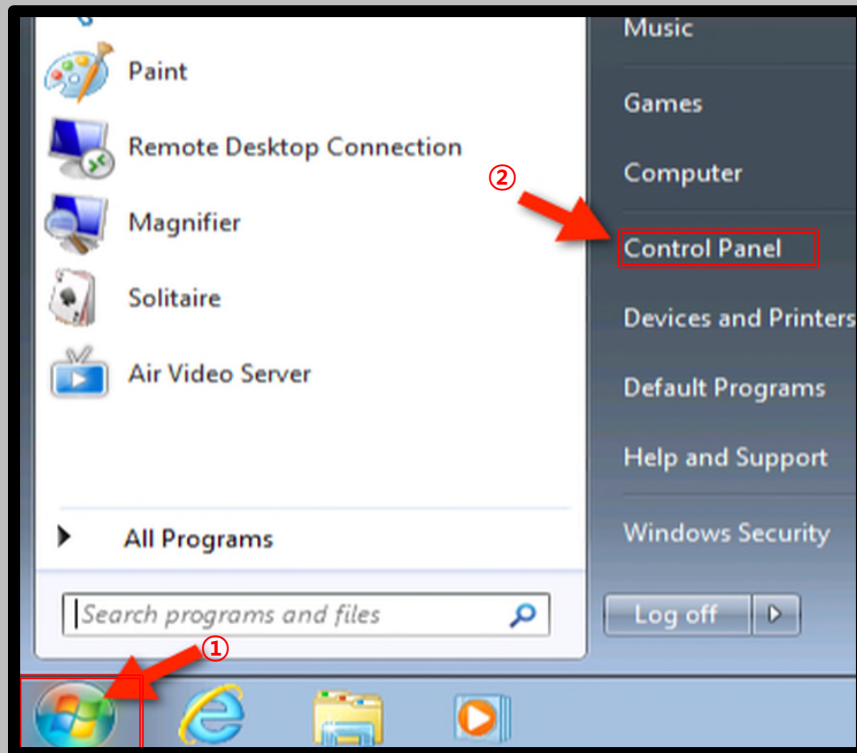
- Network manual setting screen for using wireless LAN from PC using Windows 7, Vista
- The contents of each OS may differ when using the Windows built-in setting.



STEP. 4

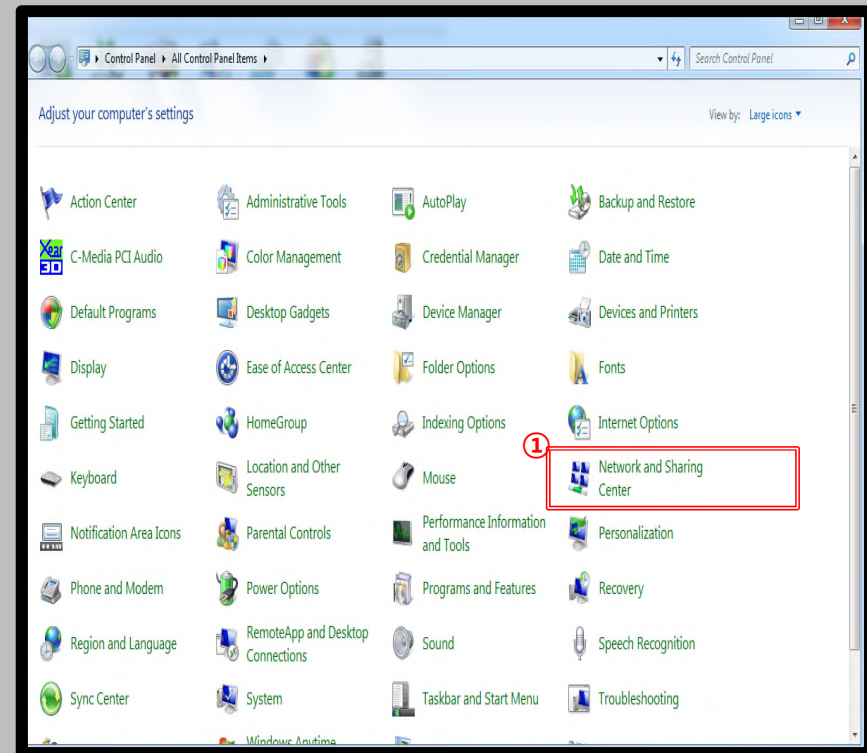
Verifying Profile AutoSet(STEP 4~STEP 7 can be omitted)

- ① Start
- ② Click Control Panel



STEP. 5

- ① Click Network and Sharing center



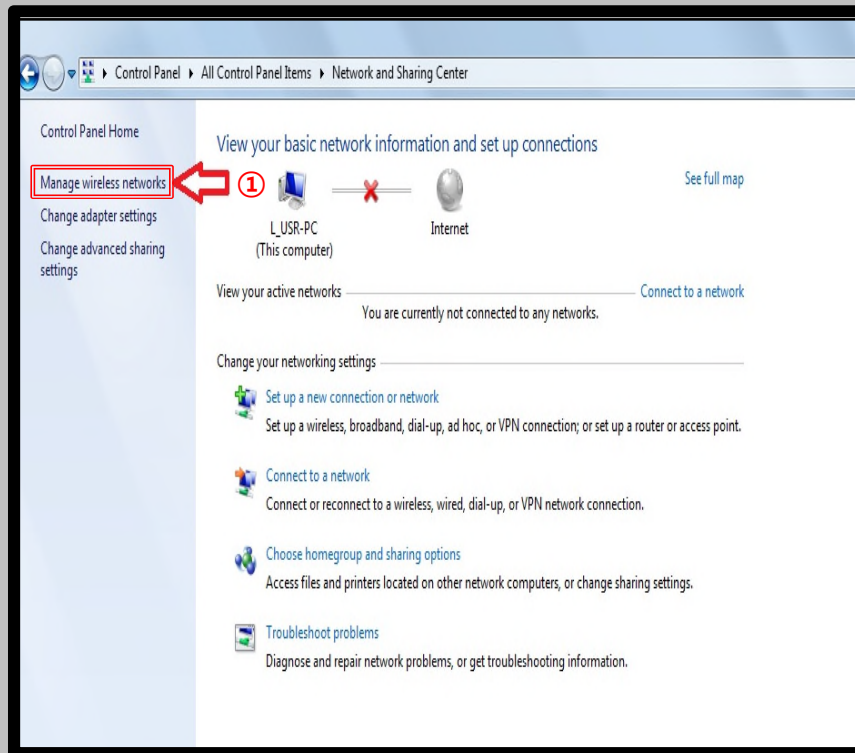
Windows 7, Vista Profile manual setting

- Network manual setting screen for using wireless LAN from PC using Windows 7, Vista
- **The contents of each OS may differ when using the Windows built-in setting.**



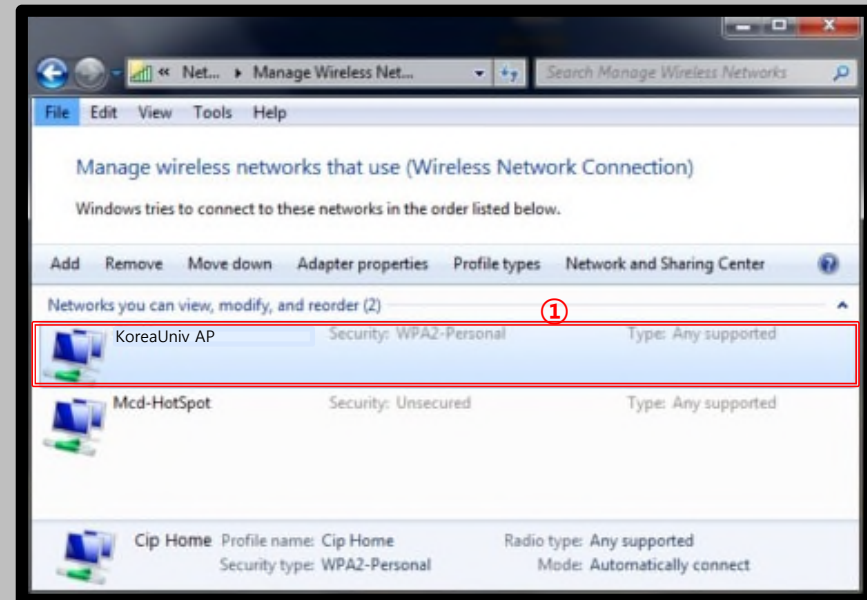
STEP. 6

① Click manage Wireless Networks



STEP. 7

① Check KoreUniv AP



Windows 7, Vista Profile manual setting

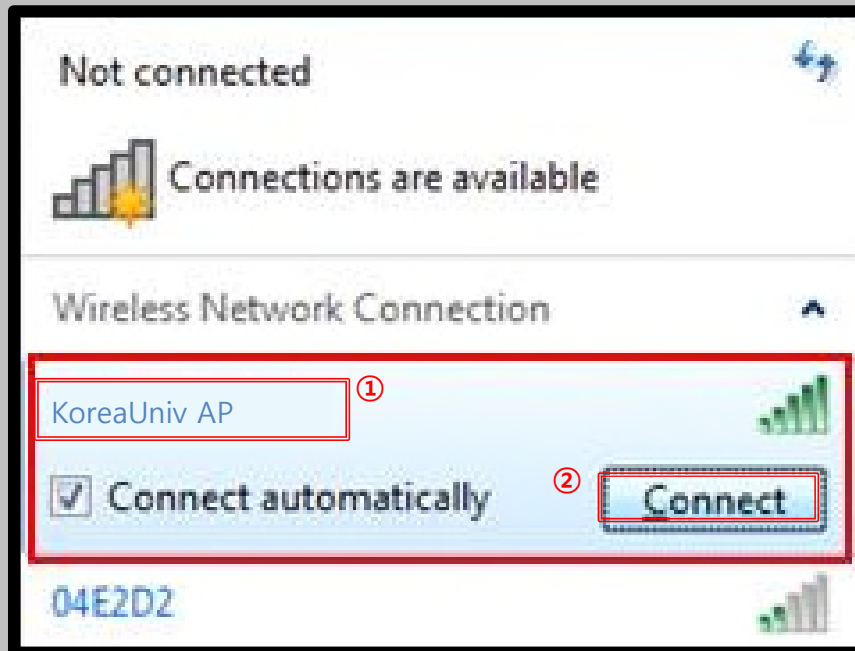
- Network manual setting screen for using wireless LAN from PC using Windows 7, Vista
- The contents of each OS may differ when using the Windows built-in setting.



KOREA
UNIVERSITY

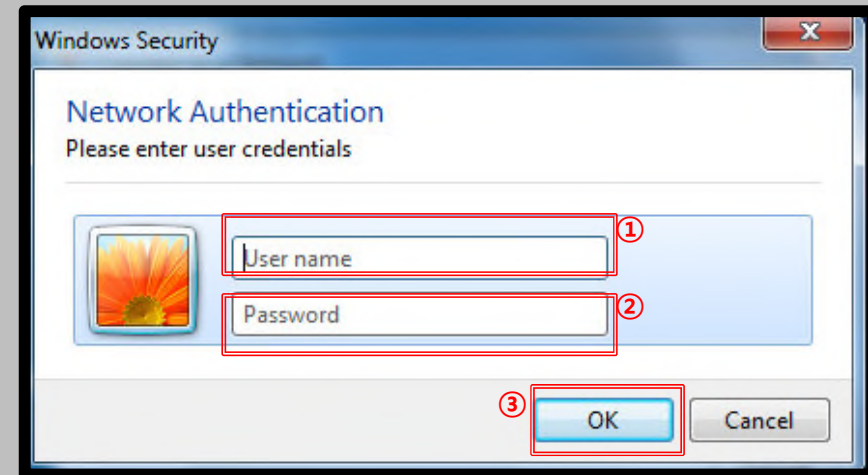
STEP. 8

- ① KoreaUniv AP ▶ Connect



STEP. 9

- ① User name : Portal ID
- ② Password : Portal Password
- ③ Clcik OK





KOREA
UNIVERSITY

KU-The Future
110 years and beyond

2. Windows 7, Vista Delete



Windows 7, Vista Profile manual delete

- Network manual delete screen for using wireless LAN from PC using Windows 7, Vista
- The contents of each OS may differ when using the Windows built-in setting.



STEP. 1

① www.korea.ac.kr Connect ▶ University Life ▶ Wireless LAN ▶ Click Delete profile automatically(bit check)

무선랜 이용안내

고려대학교의 무선랜 서비스는 학교구성원에게만 제공되는 서비스로 서울캠퍼스에서 아래와 같이 이용하실 수 있으며, 별도의 신청절차는 없습니다.

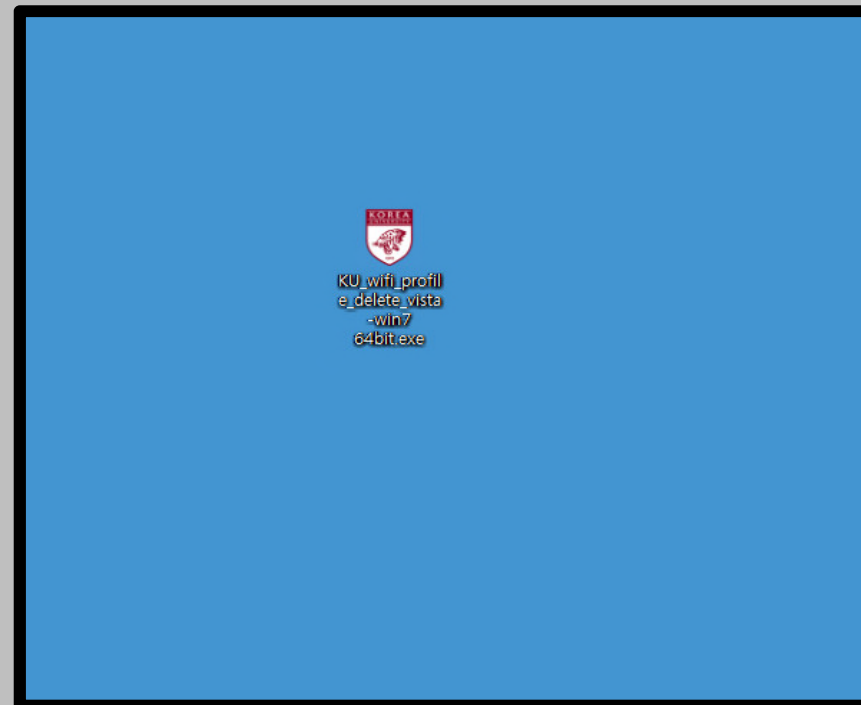
구분	OS 종류	매뉴얼		비고	
		한글	English		
노트북	Windows OS 계열	매뉴얼(수동)	Manual(Classic)	프로파일 자동설정 64bit 프로파일 자동삭제 64bit 프로파일 자동설정 32bit 프로파일 자동삭제 32bit	
		매뉴얼(자동)	Manual(Auto)		
	MAC OS 계열		매뉴얼		Manual
	Android OS		매뉴얼		Manual
Apple IOS		매뉴얼	Manual		

문의

담당자 : 02) 3290 - 4194, Email Address : jmlee76@korea.ac.kr

STEP. 2

① After downloading KU_wifi_profile_delete_vista-win7 64bit or 32bit.exe file



Bit verification method

Start ▶ Computer ▶ Right-click "property" ▶ Determining the System Type

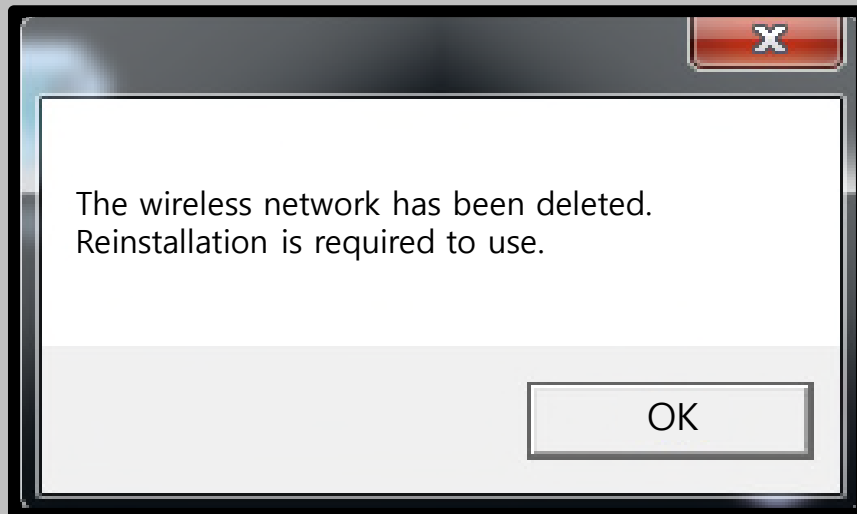
Windows 7, Vista Profile manual delete

- Network manual delete screen for using wireless LAN from PC using Windows 7, Vista
- **The contents of each OS may differ when using the Windows built-in setting.**



STEP. 3

① Profile deleted successfully



Windows 7, Vista Profile manual delete

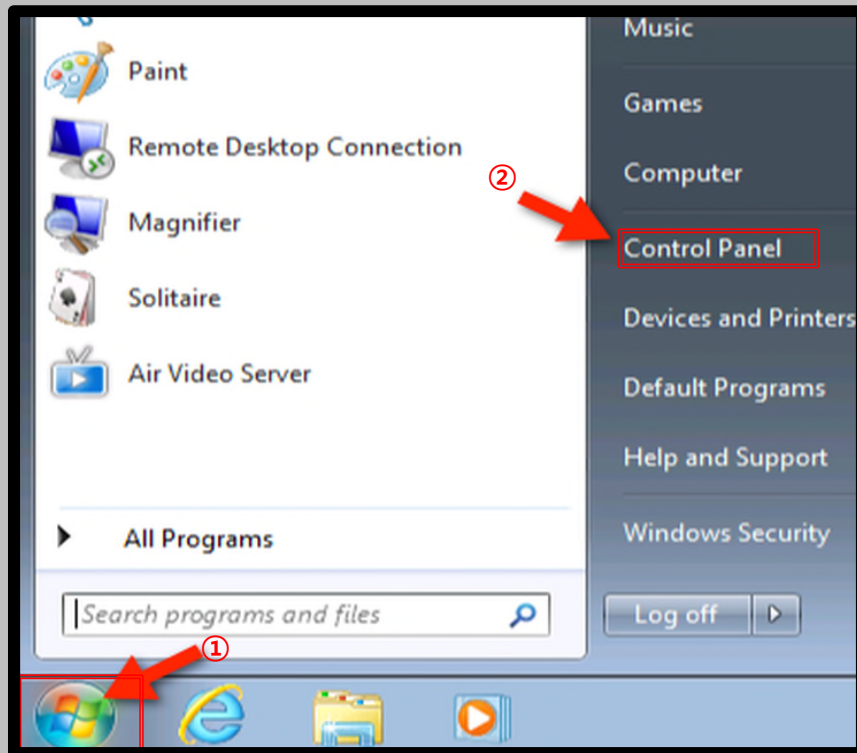
- Network manual delete screen for using wireless LAN from PC using Windows 7, Vista
- **The contents of each OS may differ when using the Windows built-in setting.**



STEP. 4

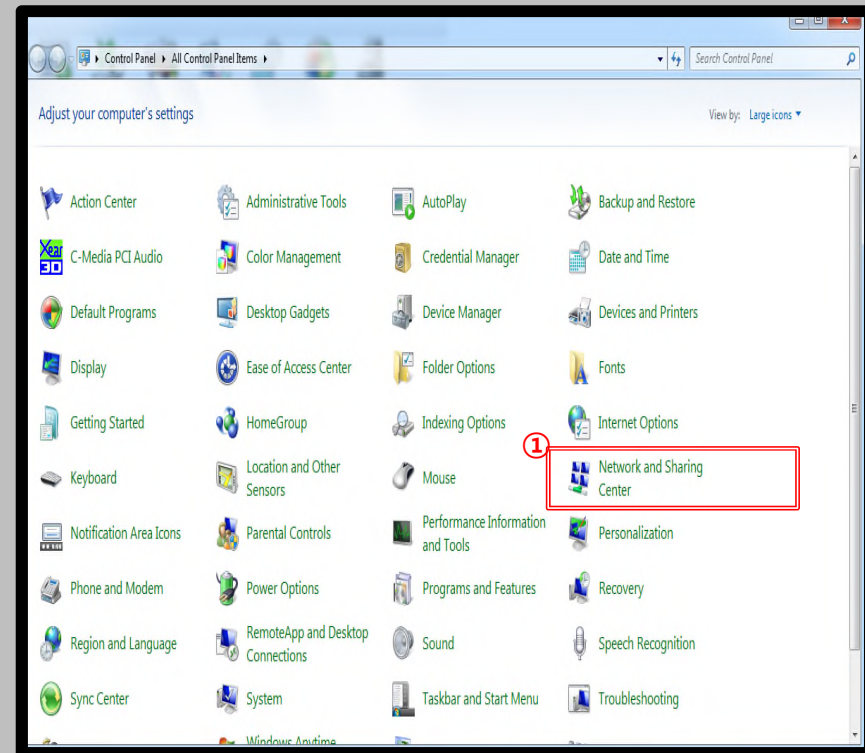
Verifying Profile AutoSet(STEP 4~STEP 7 can be omitted)

- ① Start
- ② Click Control Panel



STEP. 5

- ① Click Network and Sharing center



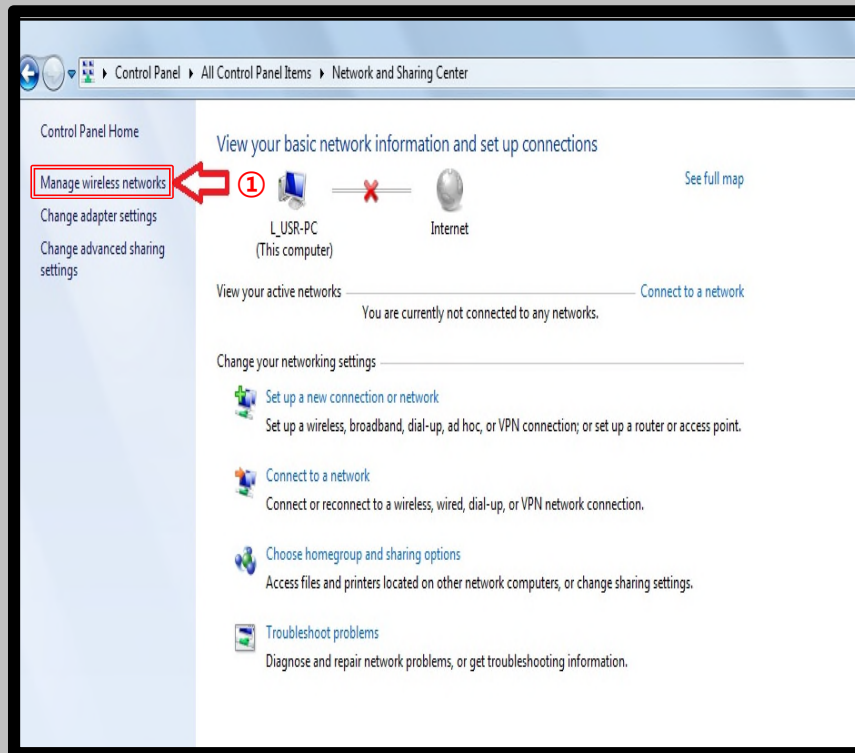
Windows 7, Vista Profile manual delete

- Network manual delete screen for using wireless LAN from PC using Windows 7, Vista
- **The contents of each OS may differ when using the Windows built-in setting.**



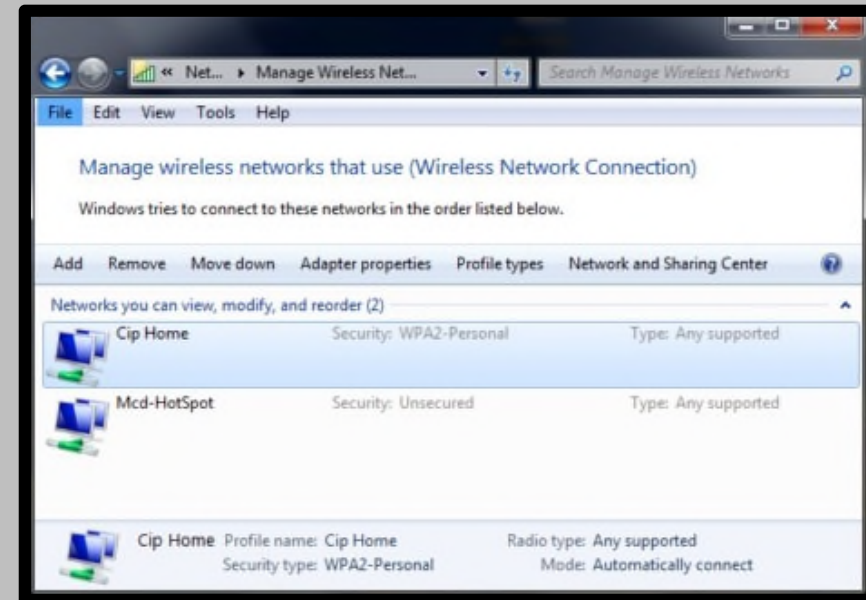
STEP. 6

- ① Click manage Wireless Networks



STEP. 7

- ① Check KoreUniv AP





Thank you