



**KOREA**  
UNIVERSITY

*KU-The Future*  
110 years and beyond

# How to set up a wireless network

## MAC OS





# Contents

1. Profile settings
2. Profile Delete





**KOREA**  
UNIVERSITY

*KU-The Future*  
110 years and beyond

# 1. Profile Setting



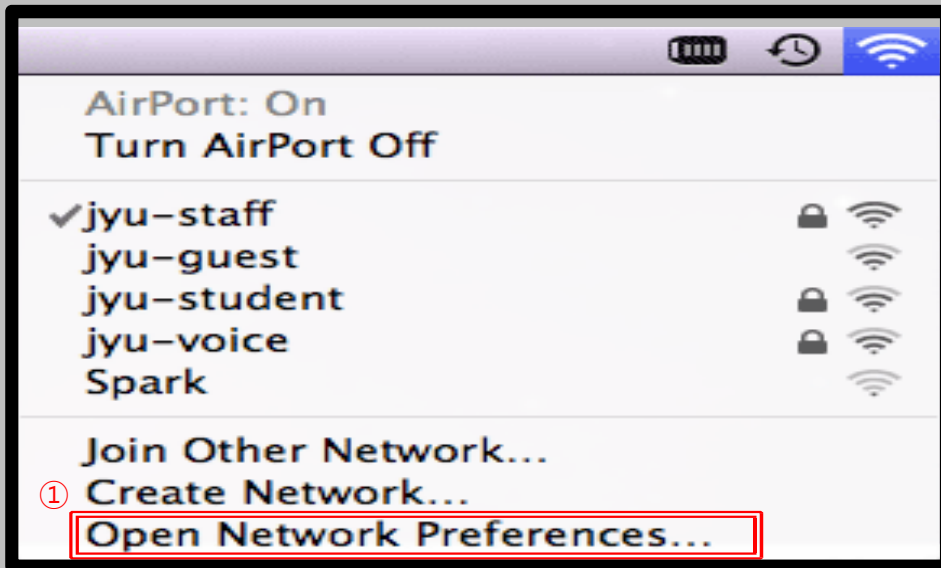
# MAC OS Profile Setting

- Network configuration screen for using wireless LAN in MacBook using IOS
- All terminal settings using IOS are the same.



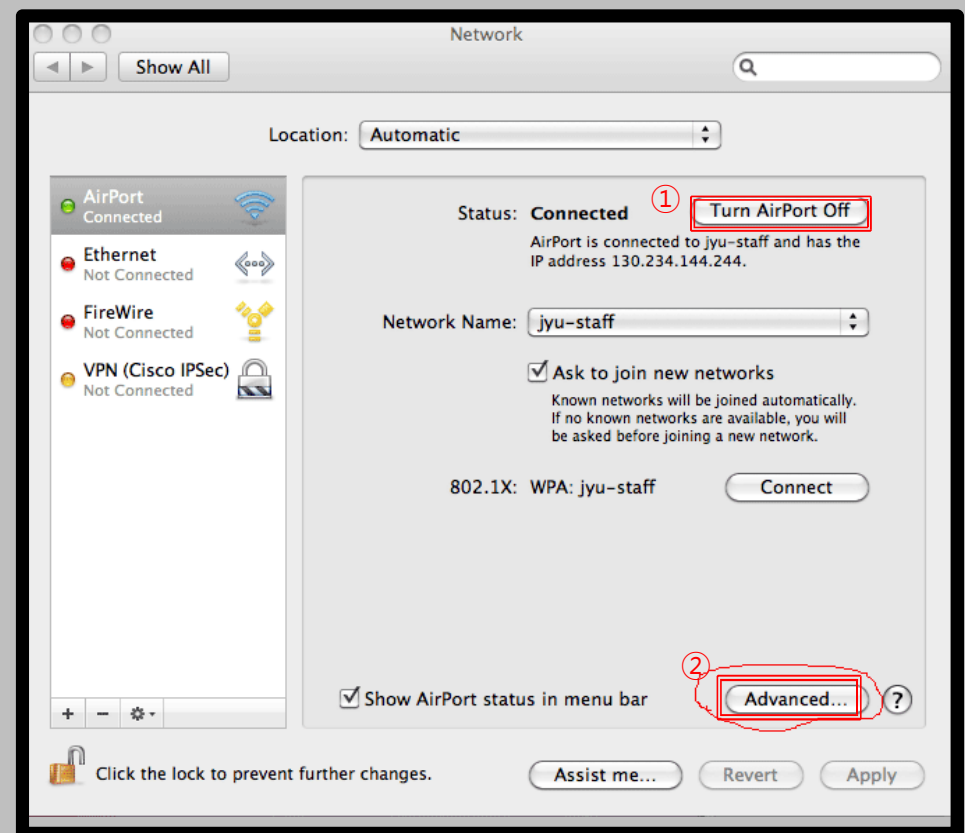
## STEP. 1

- ① Wireless Icon ▶ Open Network preferences



## STEP. 2

- ① Activate Wi-Fi by pressing the Wi-Fi on button.
- ② Click Advanced(Continue in STEP.3)



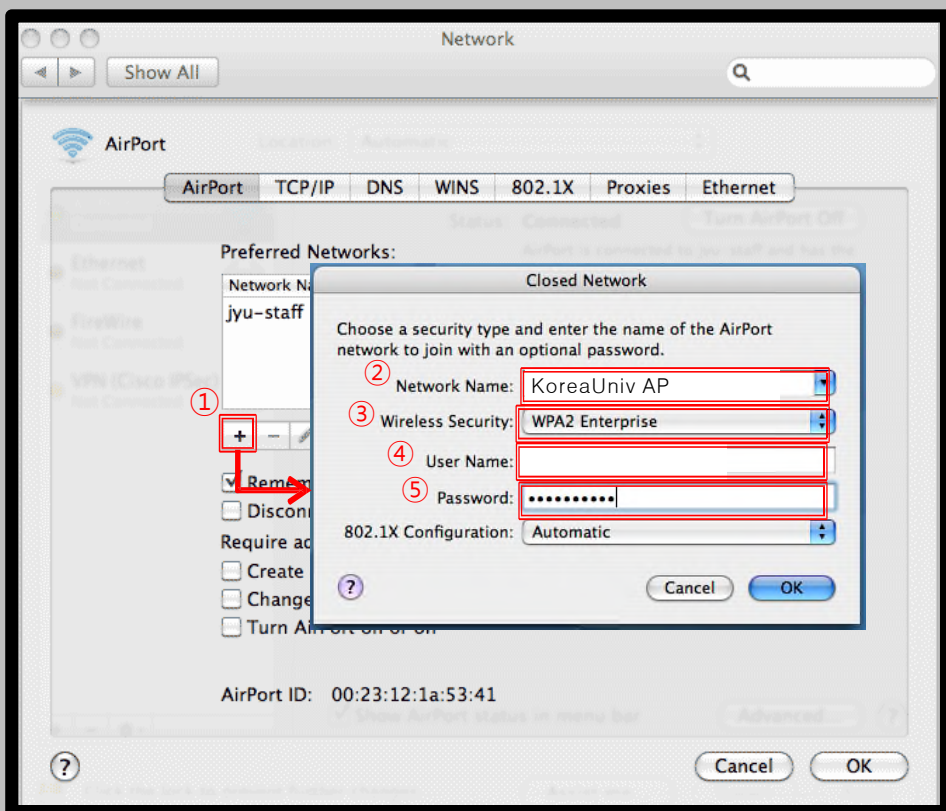
# MAC OS Profile Setting

- Network configuration screen for using wireless LAN in MacBook using IOS
- All terminal settings using IOS are the same.



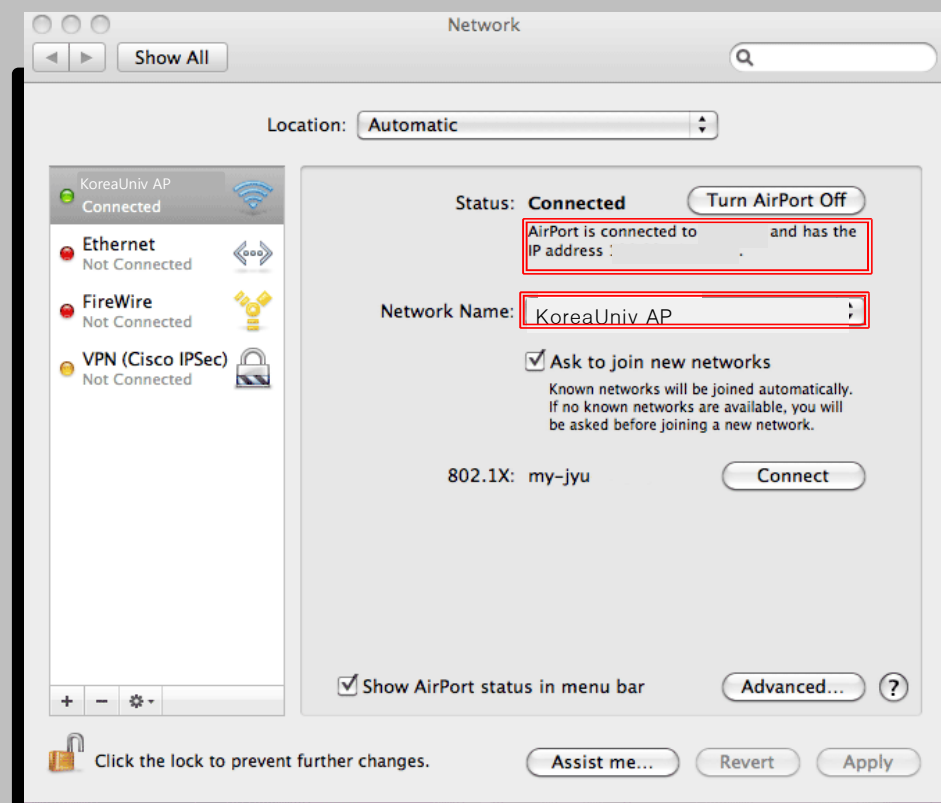
## STEP. 3

- ① Click '+' in the network advanced information.
- ② Network name : KoreaUniv AP (Case, Spacing division)
- ③ Security : Enterprise WPA/WPA2
- ④ User name : Portal ID
- ⑤ Password : Portal Password



## STEP. 4

- ① Confirm connection completion





**KOREA**  
UNIVERSITY

*KU-The Future*  
110 years and beyond

## 2. Profile Delete



# MAC OS

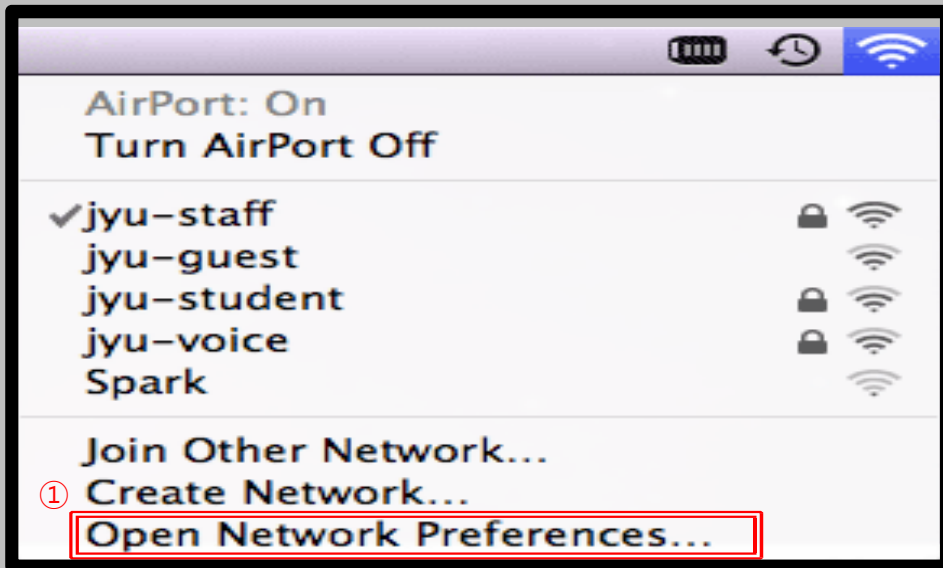
## Profile Delete

- This screen is for deleting the wireless LAN from MacBook using IOS
- All terminal settings using IOS are the same.



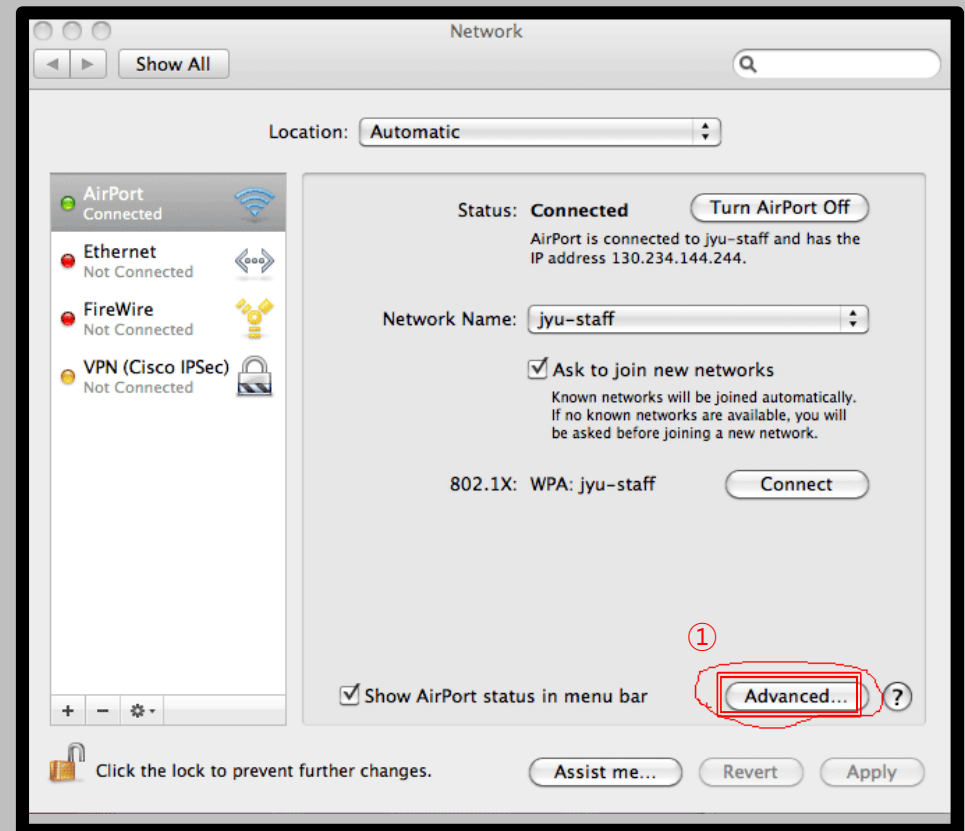
### STEP. 1

- ① Wireless Icon ► Open Network preferences



### STEP. 2

- ① Click Advanced



# MAC OS

## Profile Delete

- This screen is for deleting the wireless LAN from MacBook using IOS
- All terminal settings using IOS are the same.

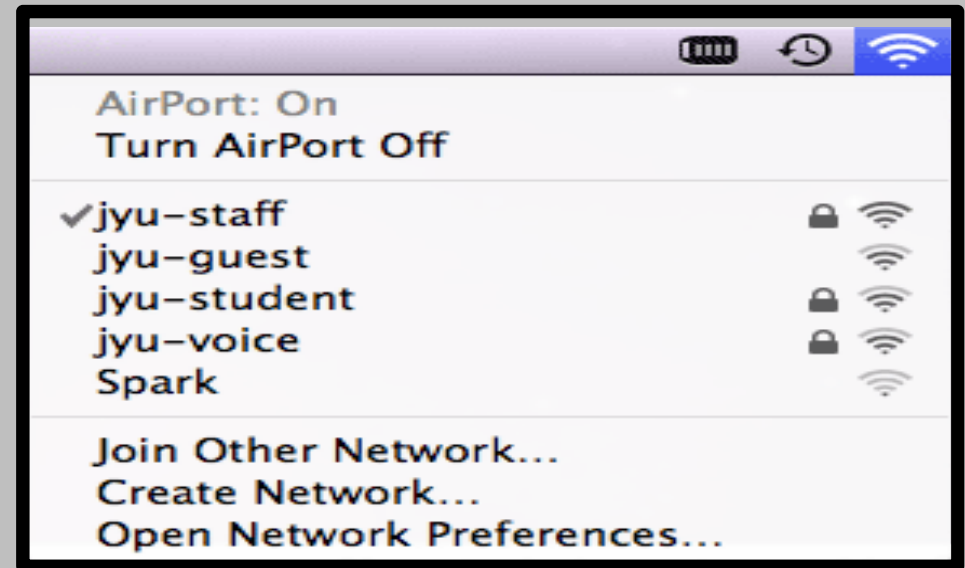
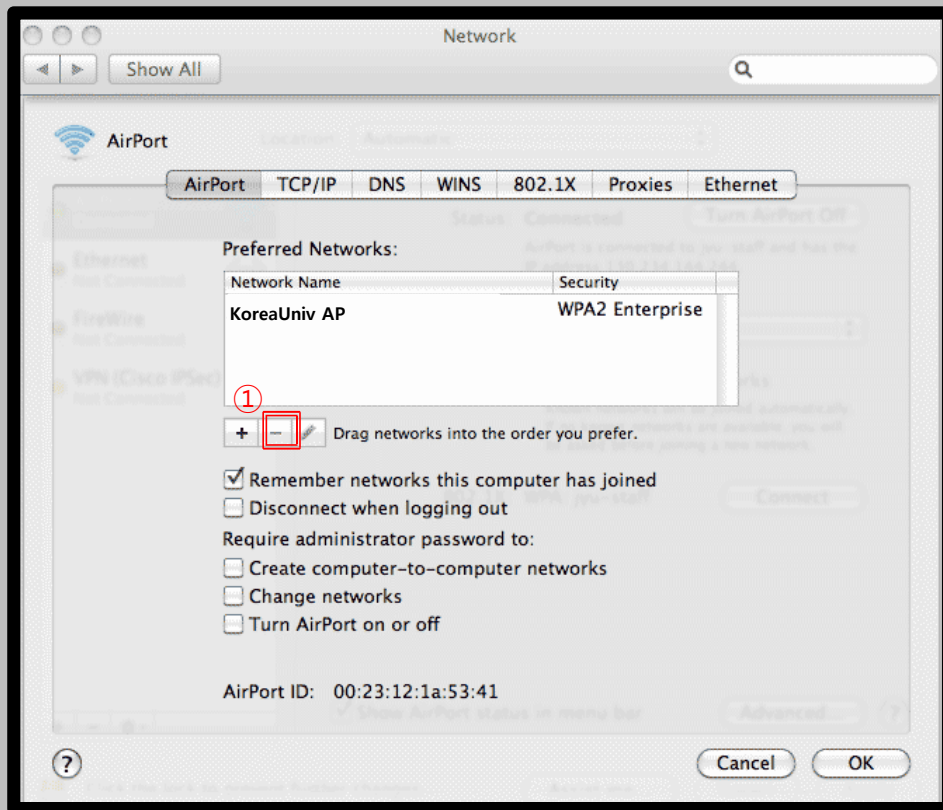


### STEP. 3

- ① KoreaUniv AP Check
- ② Clcik '-' button to delete

### STEP. 4

- ① KoreaUniv AP delete Check





**Thank you**