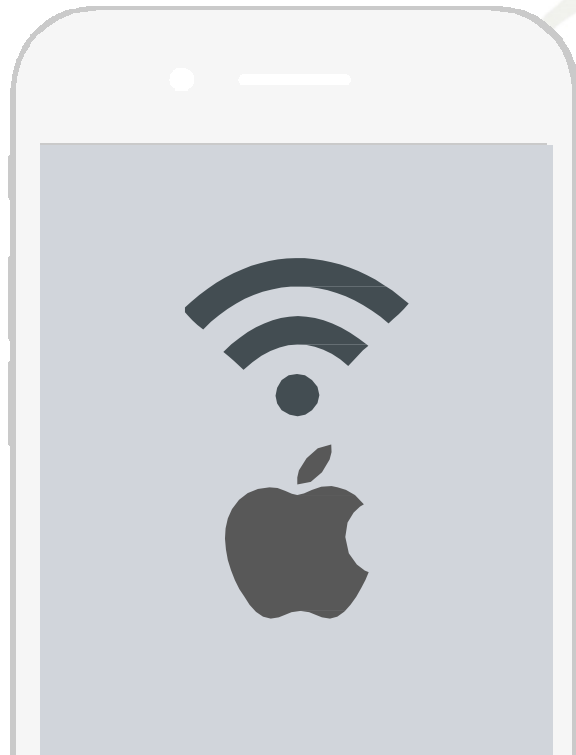




**KOREA**  
UNIVERSITY

# How to set up wireless network MAC OS

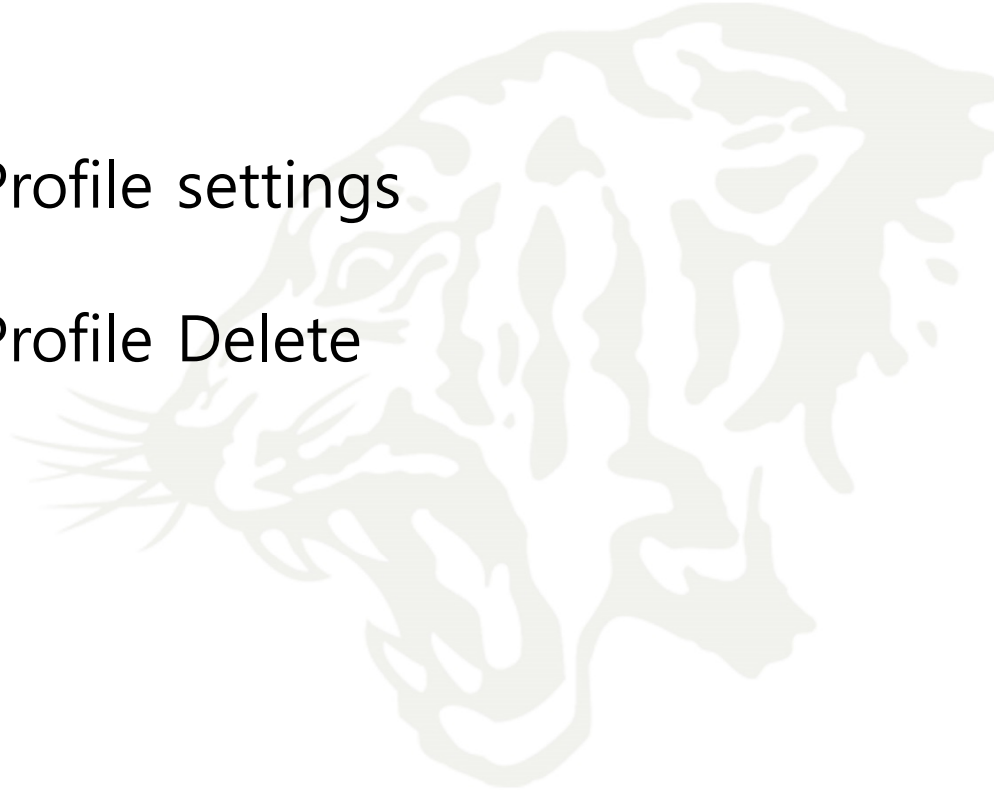




**KOREA**  
UNIVERSITY

# Contents

1. Profile settings
2. Profile Delete





**KOREA**  
UNIVERSITY

# 1. Profile Setting



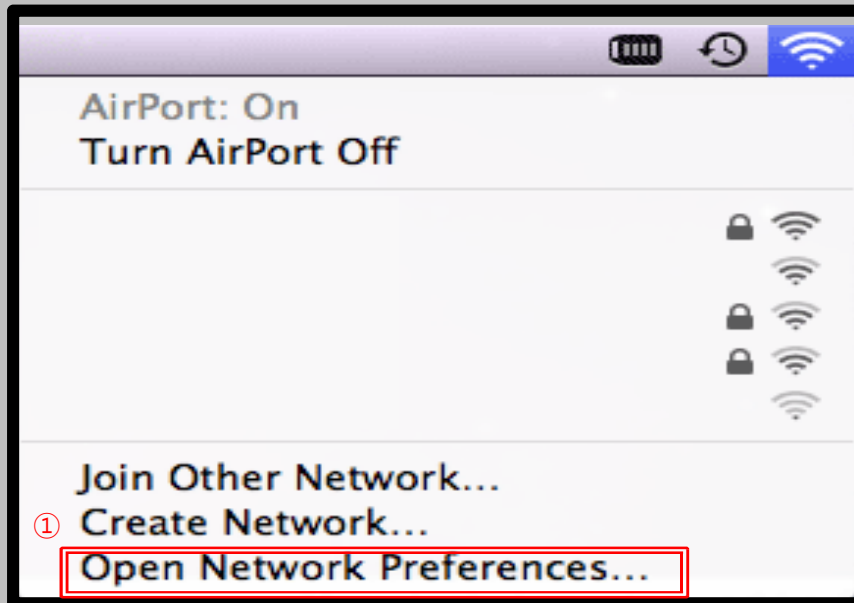
# MAC OS Profile settings

- To use wireless WiFi on MacBooks using iOS Network setting screen.
- All device settings using iOS are the same.



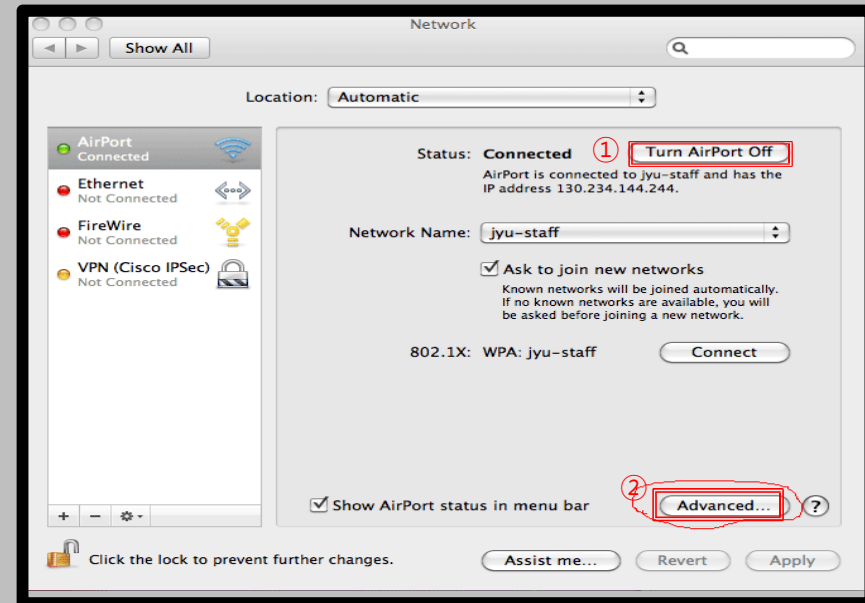
## STEP. 1

- ① Wireless icon ► Open Network Preferences



## STEP. 2

- ① Press the Wi-Fi On button to enable Wi-Fi
- ② Advanced Option (Continue in STEP.3)



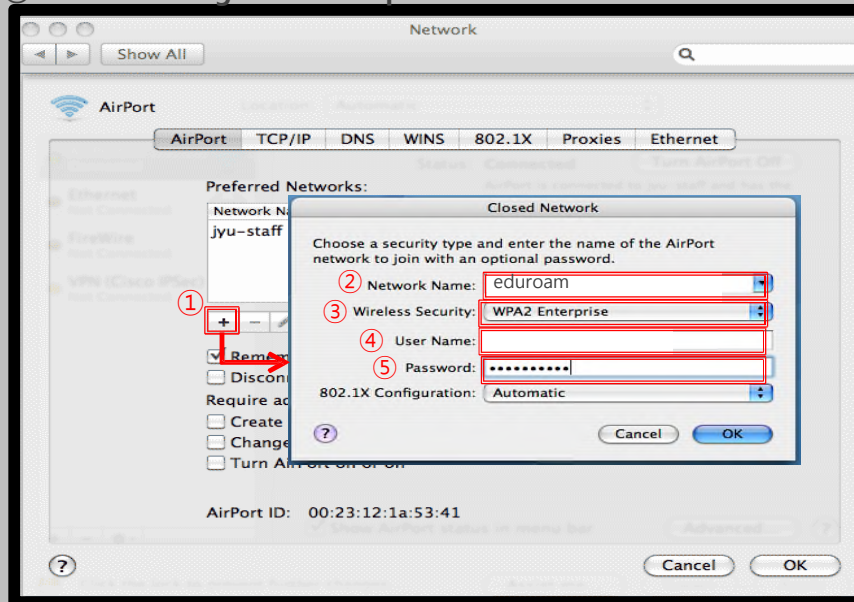
# MAC OS Profile settings

- To use wireless WiFi on MacBooks using iOS Network setting screen.
- All device settings using iOS are the same.



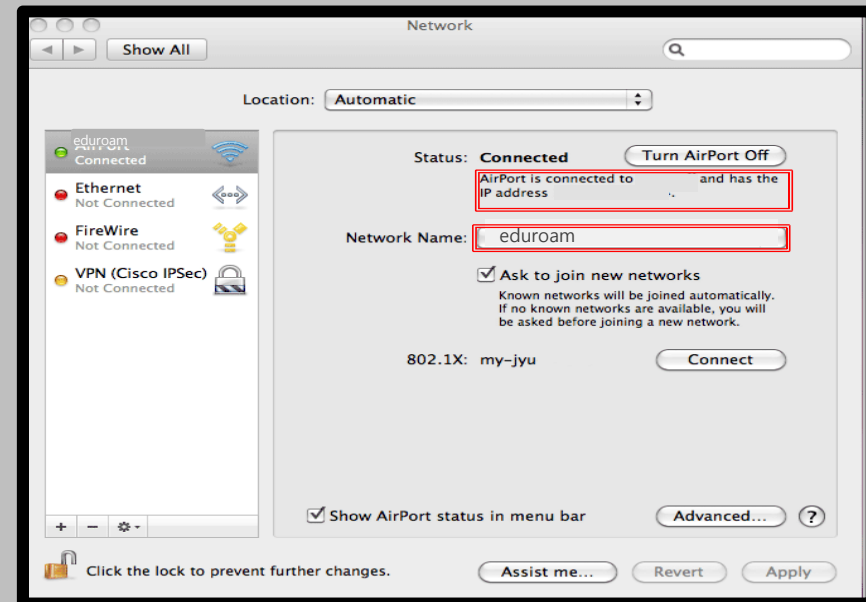
## STEP. 3

- ① Click '+' button of network advanced information
- ② Network Name: eduroam
- ③ Security: Enterprise WPA / WPA2
- ④ Username: organization's ID@domain
- ⑤ Password: organization's password



## STEP. 4

- ① Confirm connection completion





**KOREA**  
UNIVERSITY

## 2. Profile Delete



# MAC OS

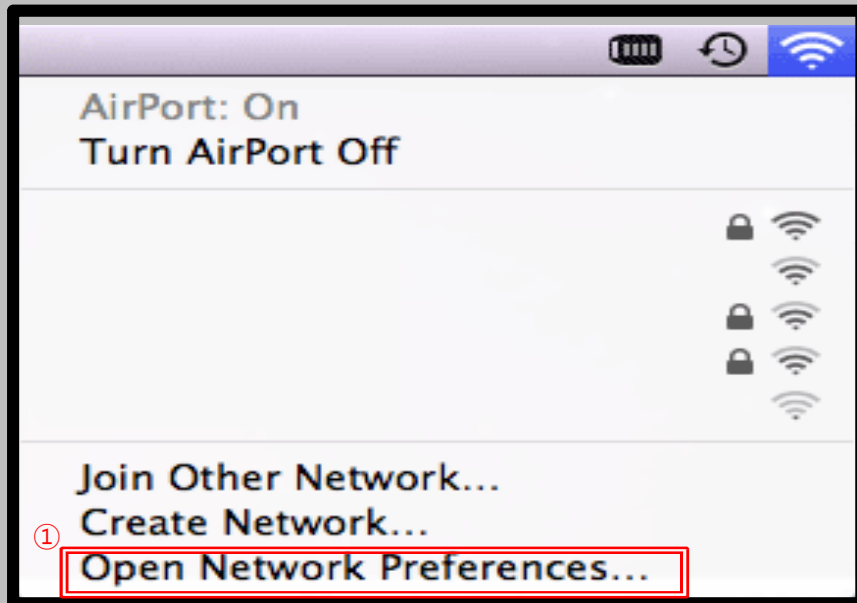
## Delete profile

- To use wireless WiFi on MacBooks using iOS Network delete screen.
- All device settings using iOS are the same.



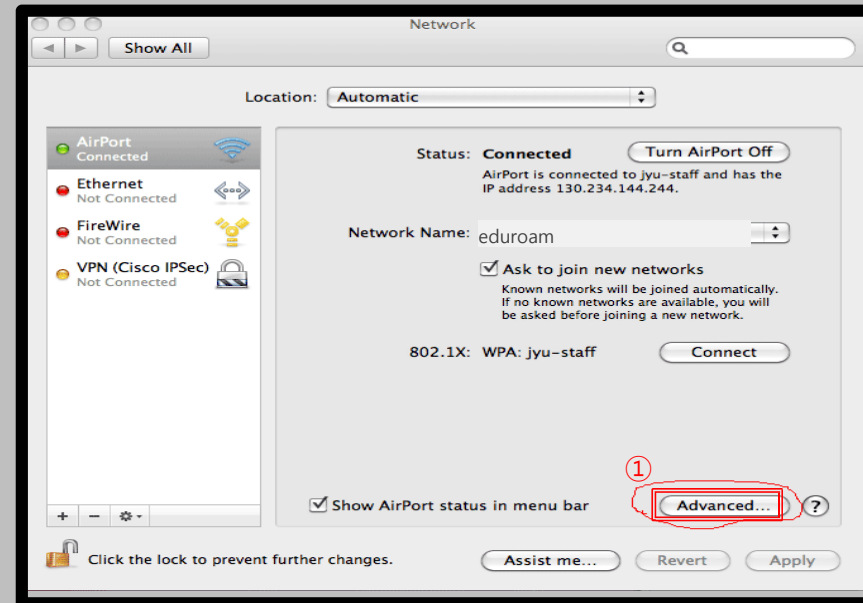
### STEP. 1

① Wireless icon ► Open Network Preferences



### STEP. 2

① Click Advanced Options



# MAC OS

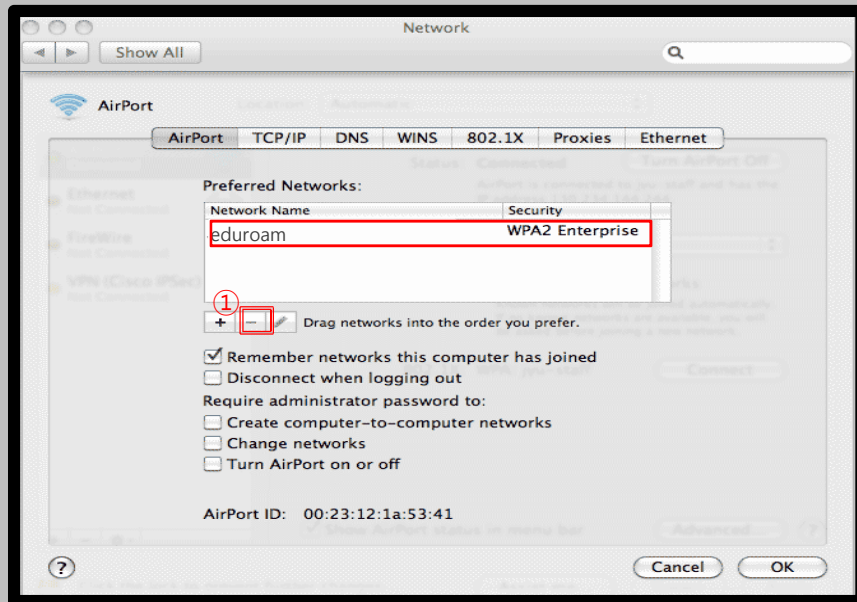
## Delete profile

- To use wireless WiFi on MacBooks using iOS Network delete screen.
- All device settings using iOS are the same.



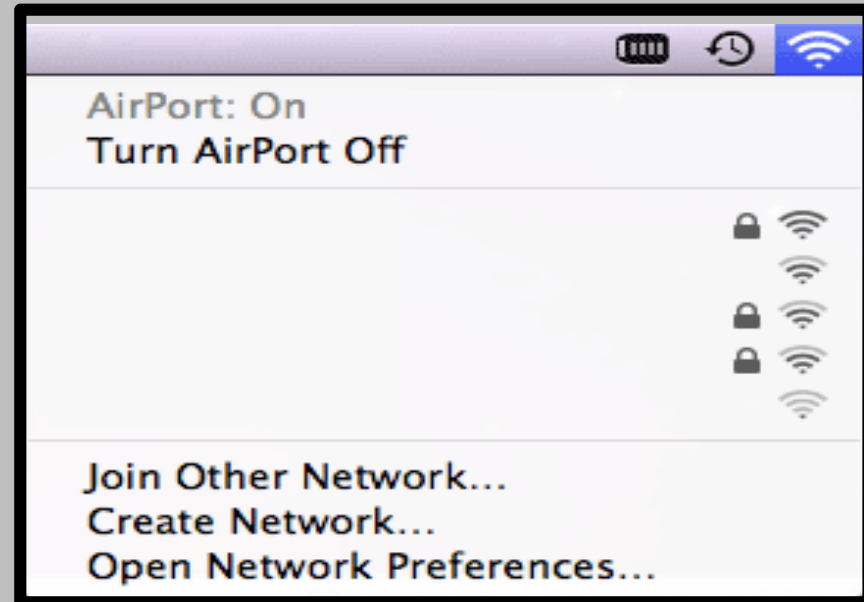
### STEP. 3

- ① Confirmation of eduroam
- ② Click '-' button to delete



### STEP. 4

- ① eduroam deletion confirmation





---

**Thank you**