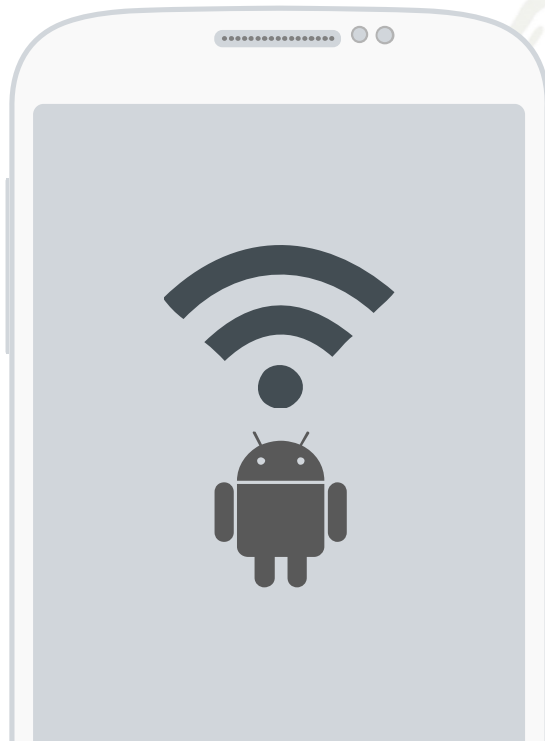




**KOREA**  
UNIVERSITY

# How to set up wireless network Android OS Device

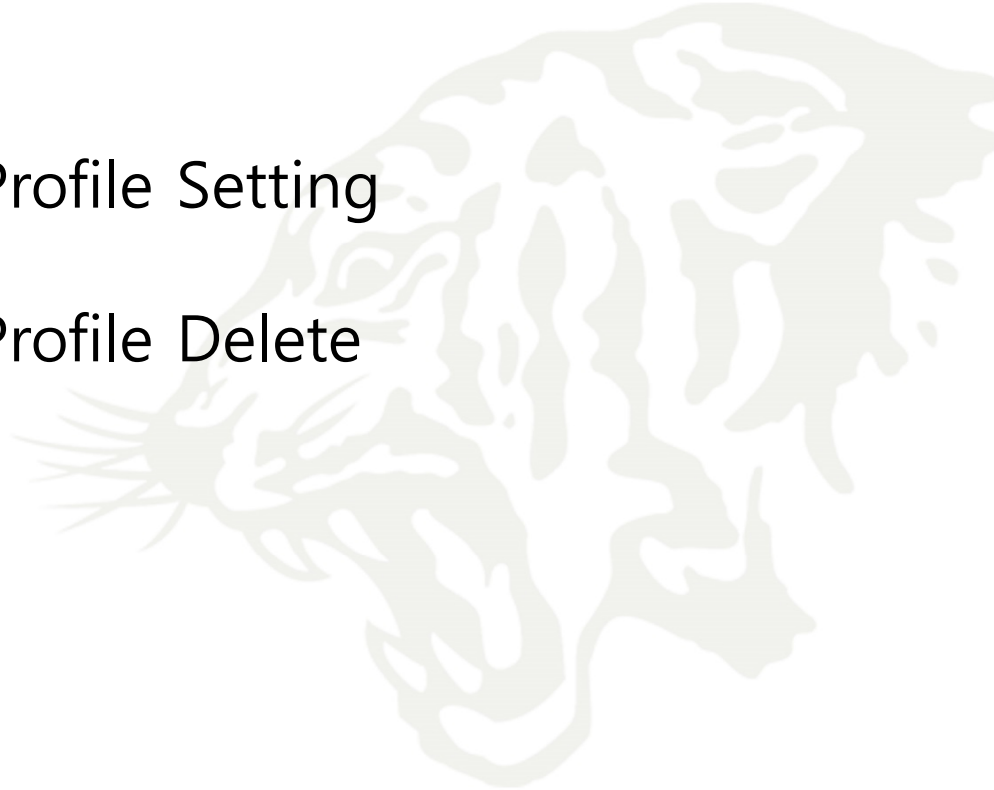




**KOREA**  
UNIVERSITY

# Contents

1. Profile Setting
2. Profile Delete





**KOREA**  
UNIVERSITY

# 1. Profile Setting



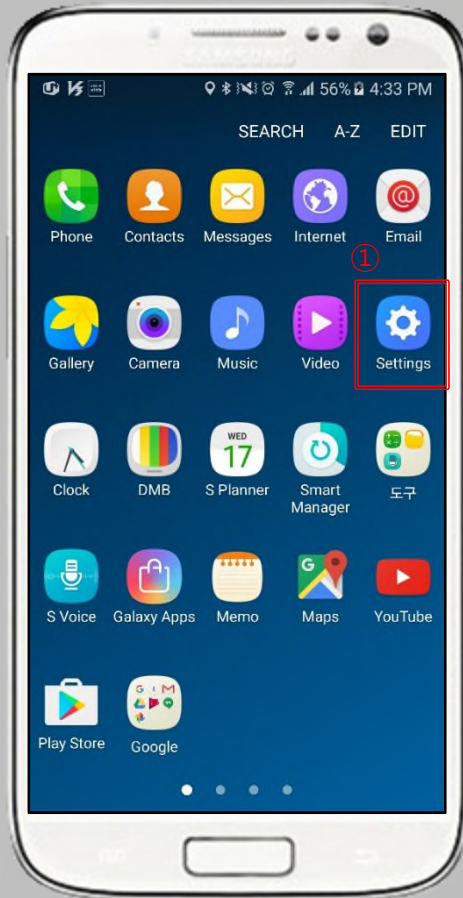
# Android Mobile Setting

- Wireless WiFi on handset using Android OS Network setting screen for use
- All terminal settings using the Android OS are the same.



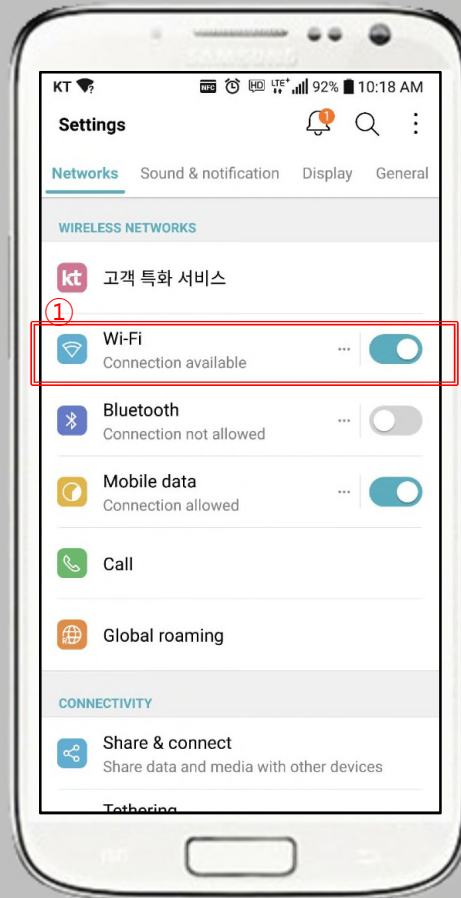
## STEP.1

① Click Settings



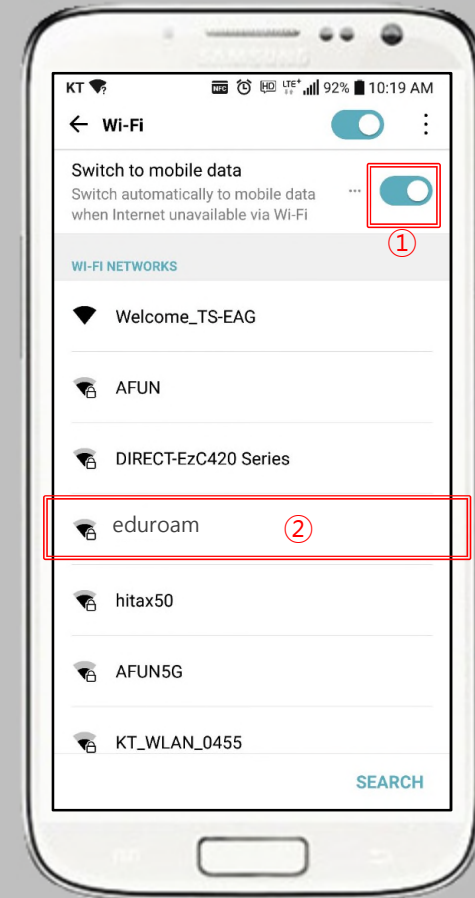
## STEP.2

① Click Wi-Fi



## STEP.3

① Using Wi-Fi  
② Click eduroam



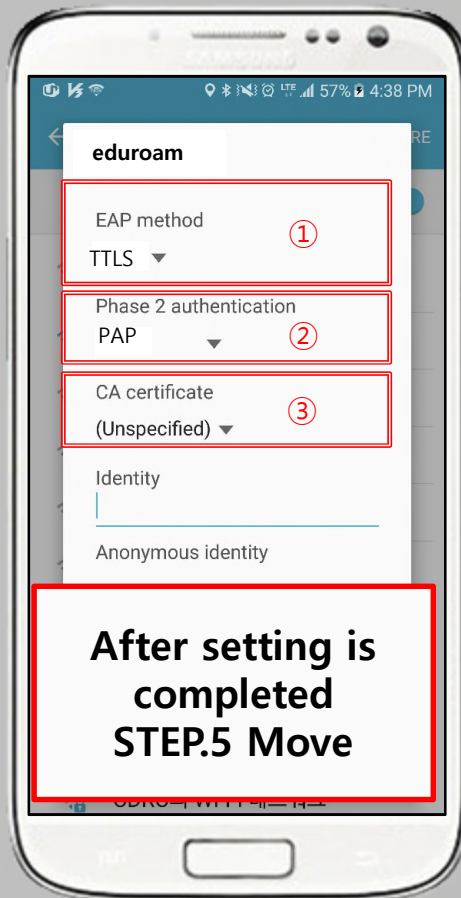
# Android Mobile Setting

- Wireless WiFi on handset using Android OS Network setting screen for use
- All terminal settings using the Android OS are the same.



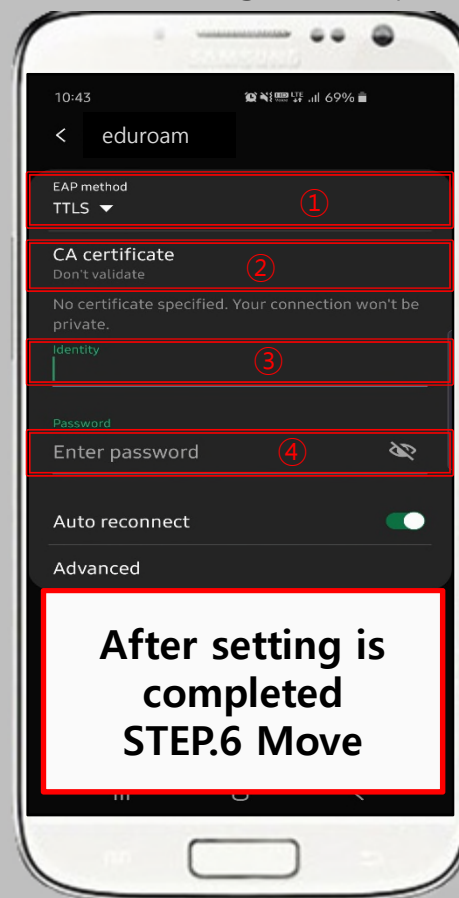
## STEP.4-1

- ① EAP method: TTLS setting
- ② 2-step authentication: PAP setting
- ③ CA certificate: Not set



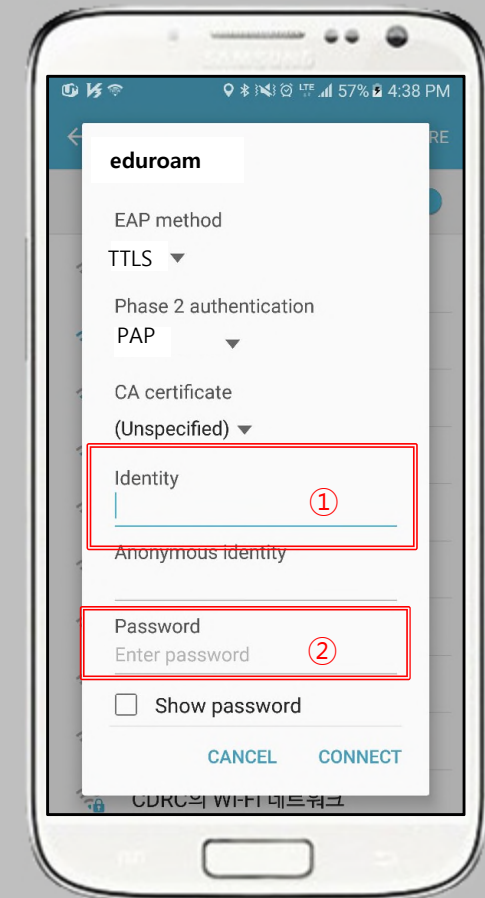
## STEP.4-2

- ① EAP method TTLS setting
- ② CA certificate: Don't validate
- ③ ID: organization's ID@domain
- ④ Password: organization's password



## STEP.5

- ① ID: organization's ID@domain
- ② Password: organization's password



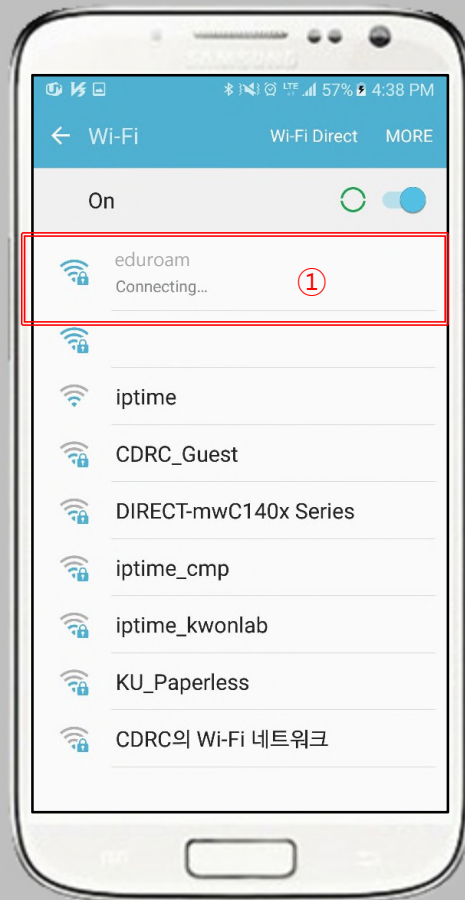
# Android Mobile Setting

- Wireless WiFi on handset using Android OS Network setting screen for use
- **All terminal settings using the Android OS are the same.**



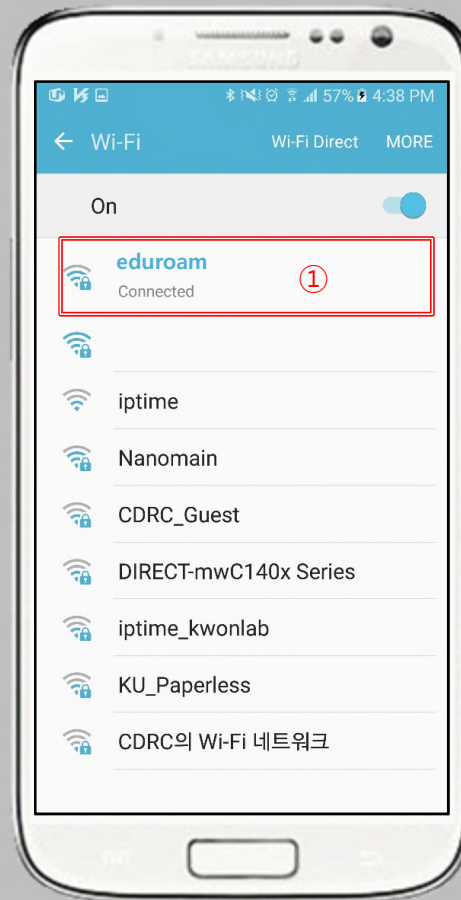
## STEP.6

① Check Connecting



## STEP.7

① Check Connected





**KOREA**  
UNIVERSITY

## 2. Profile Delete



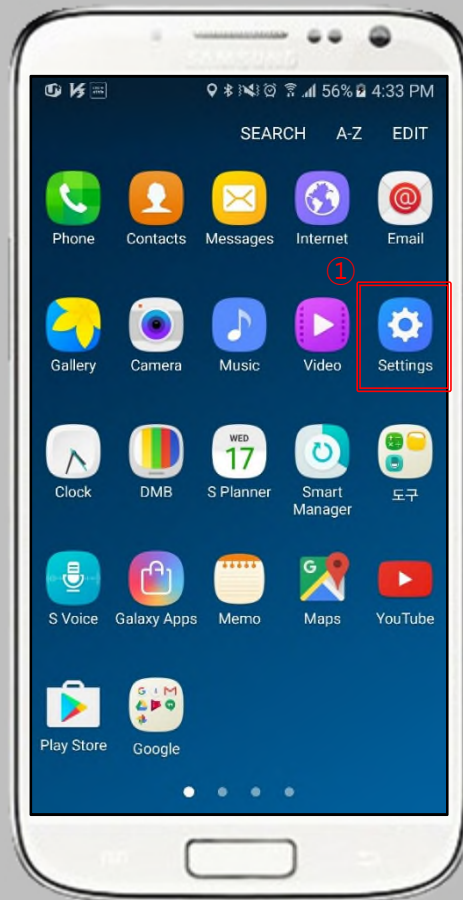
# Android Mobile Delete

- Wireless WiFi on handset using Android OS Delete network screen to clear.
- All devices using the Android OS are the same.



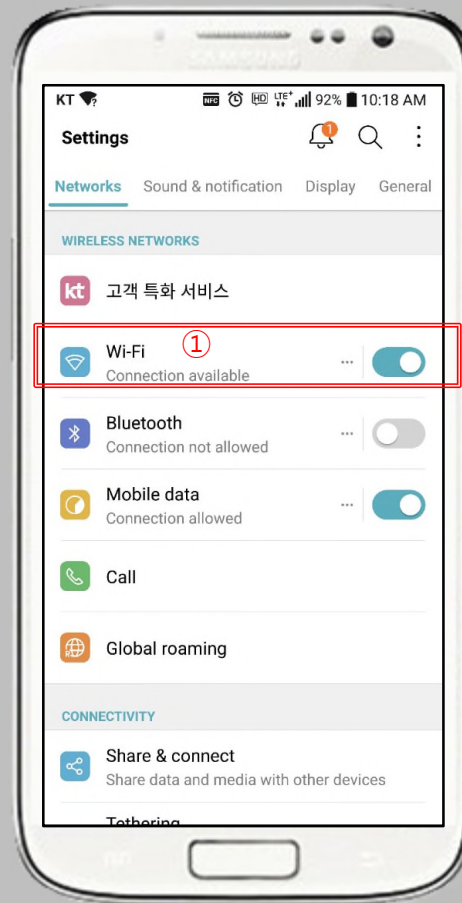
## STEP.1

① Click Settings



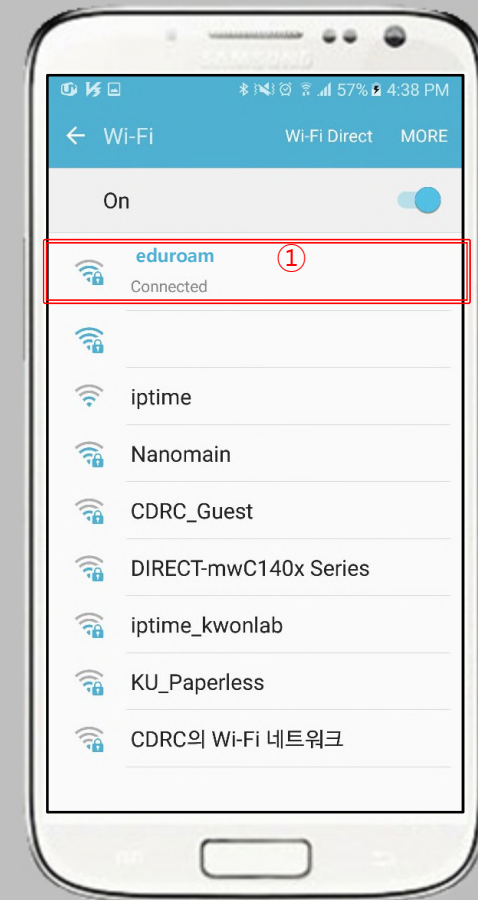
## STEP.2

① Click Wi-Fi



## STEP.3

① eduroam long press





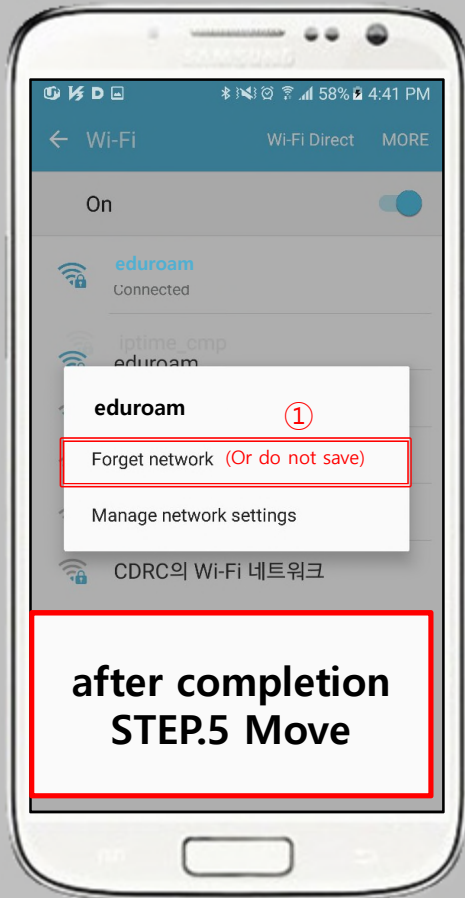
# Android Mobile Delete

- Wireless WiFi on handset using Android OS  
Delete network screen to clear.
- All devices using the Android OS are the same.



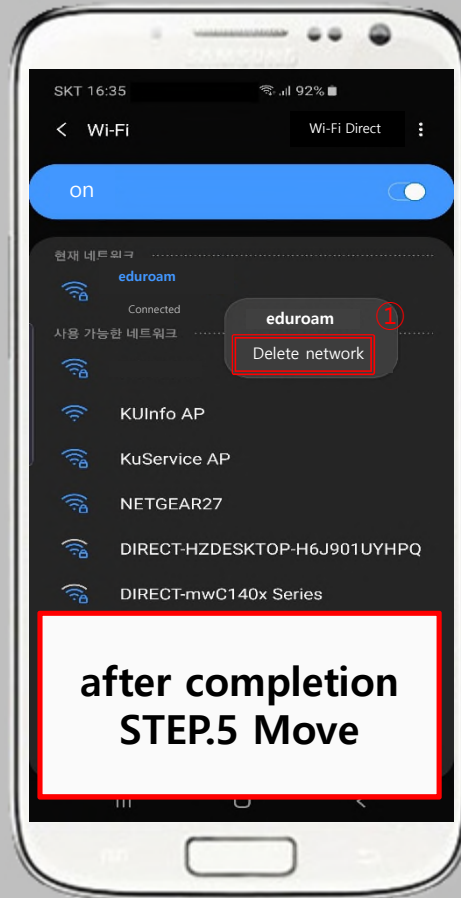
## STEP.4-1

① Network clearing or non-saving Click  
(Display different phrases depending on  
the terminal)



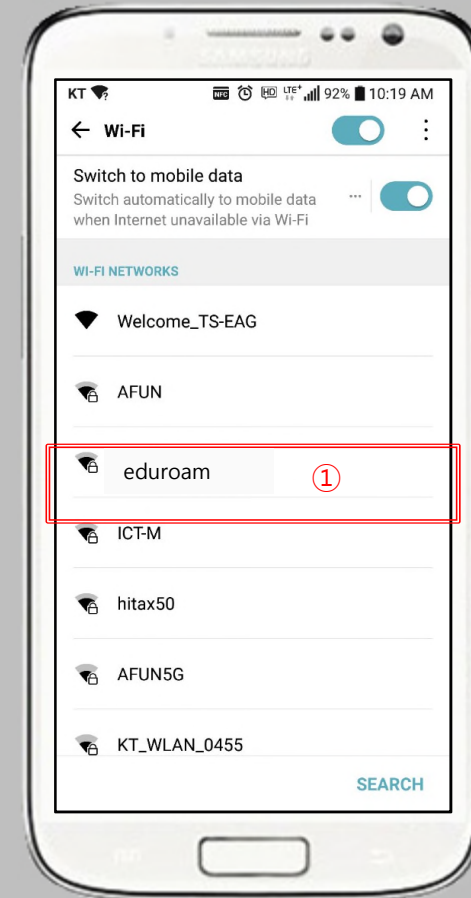
## STEP.4-2

① Click Delete Network



## STEP.5

① Confirm Disable



---

**Thank you**